

2026

Programme Handbook

New Zealand Certificates in English Language



Rāraki Upoko – Contents

Nau mai ki Ara - Welcome to Ara	4
Tō Rangi Tuatahi - Your First Day	6
New Student Welcomes, Semester 2 2026.....	6
Equipment requirements	7
Logins.....	7
Timetable information.....	7
How to find your way around	8
Korero Nui - Important Information	9
Learner Information Handbook	9
Attendance.....	9
Non-Engagement	10
Drugs and Alcohol.....	11
Artificial Intelligence (AI) Tools	11
Kā Raki whakahirahira - Important Dates	12
Kā whakapātaka - Contact Details	13
Taipitopito akoraka - Programme Details	15
Mahere Ako - Programme Structure	23
Kā tika me kā kaweka o te tauira - Learner Responsibilities and Rights	27
Unacceptable Behaviour for Learners, or Visitors at Ara.....	29
Learner Behaviour in class / classroom maintenance	30
Kā Aromata Kā Taunakitaka Mōu – Support for You	31
Quick reference – Where to find help if you have feedback or want to raise an issue	31
Kā Aromatawai - Assessments	33
Academic Integrity	34
The Grade Scale.....	36
Kā tikaka aromatawai - Assessment Regulations	37
Regulations Flowchart	37
Which form do I use?	37
Extensions.....	39
Resits or resubmission of assessment tasks	39
Second Results (course level).....	39

Marks Carried Forward.....	39
Supported assessment	39
Recognising Prior Knowledge and Skills	40
Alternative Assessments	40
Aegrotat.....	40
Reconsideration of Assessment Decisions.....	40
Reconsideration of a Course Final Grade	41
Appeal of Reconsideration Decision	41
Conceded Pass	41
Kā putaka me te Whakapōtaetaka - Results & Graduation	42
Accessing Your Results	42
Academic Transcripts.....	42
Exam Scripts and Assessments	42
Receiving Your Qualification	43
Graduation.....	44
Kā ture me kā tikaka - Policies & Procedures.....	45
Academic Policies.....	45
Academic Support and Progression.....	45
Formal Academic Contract.....	45
Academic Misconduct.....	46
Plagiarism	46
Use of Artificial Intelligence (AI) Tools	46
Cheating	46
Dishonest Academic Practice.....	47
Educative Processes.....	47
Penalties.....	47
Learner Behaviour Management	47
Probation	48
Exclusion	48
Suspension	48
Cancellation of Enrolment.....	48
Refusal of Future Enrolment.....	49
Copyright and Ara Learners	49
Kā tū whare me kā rauemi - Facilities & Resources.....	52
Health and Safety.....	52

Appendix 153
Equipment Requirements53

Nau mai ki Ara - Welcome to Ara

Welcome to Te Waka Aronui, the Faculty of Culture and Services and your enrolment as a learner studying for an English Language qualification. We look forward to working with you to help you reach your goals and assist you to gain higher qualifications.

This student programme document is your essential guide for your study, so please read it carefully and keep it handy for future reference.

Your tutors and support staff are approachable, friendly and committed to creating a positive, enthusiastic and interesting learning environment. Please do not hesitate to ask questions or request help – that is why we are here.

Make the most of your time at Ara so that you achieve the best possible outcomes. We, as staff, will do all that we can to help you be successful, but it is only you who can do the learning.

Good luck!

Heather Knox

Portfolio Manager | Business & English

Te Waka Aronui | Faculty of Culture & Services

June 2026

Kia rite ki te ako Getting ready for study



Tō Rangi Tuatahi - Your First Day

Are you ready for your first day of class? Check your start date and where you need to be.

You can also find useful information on [MyAra](#). To access MyAra (from 21 days prior to your course beginning), you must have a current Ara network login and password. You can use [Ara Self-Service Password Reset](#) to activate your network account.)

New Student Welcomes, Semester 2 2026

Christchurch Madras Street Campus

For new learners enrolled in the NZ Certificates in English Language, Level 1 Foundation, Level 1, Level 2 & Level 3 General:

Date: Tuesday 14 July 2026
Time: 1.00pm-2.30pm
Venue: A134 Imagitech Theatre, Rakaia Centre

or

For new learners enrolled in the NZ Certificates in English Language, Level 3 Applied (Community & Academic pathways), Level 4 and Level 5:

Date: Wednesday 15 July 2026
Time: 1.00pm-2.30pm
Venue: A134 Imagitech Theatre, Rakaia Centre

We will contact you with directions and information about your first day of classes.

In class on your first day, you will meet your tutors and classmates, and be given an overview of the School of English including:

- Welcome
- NZ Certificate in English Language Programme overview
- Course details
- Campus familiarisation
- Policies and procedures
- Your Ara student card

Returning students

The School of English will contact you with Day 1 details. In addition, please check your [timetable](#) for your first class details.

Timaru Campus

Date: Monday 20 July 2026
Time: 9am-3pm
Venue: Student Central, Timaru Campus

On your first day, you will meet your tutors and classmates, and be given an overview of this programme, including:

- Welcome
- Programme overview
- Course details
- Campus familiarisation
- Policies and procedures
- ICT access
- Programme handbook and timetable

Returning students

Please check your [timetable](#) for your first class details.

What you will need

Bring note taking items – paper, pens and highlighters.

Equipment requirements

[For equipment requirements see Appendix 1.](#)

Logins

If you need assistance with logins etc, contact ICT ictservicesdesk@ara.ac.nz or call 03 940 8800.

Timetable information

All timetables are available on [MyAra](#).

How to find your way around

Campus maps can be found [here](#).

Parking and bus information

Campuses (excluding Manawa) have parking available. Payment and parking stickers may be required. Learn more about parking and biking, or find out about bus services [here](#).

Ara Whakatau, your official welcome

You are warmly invited to attend the official welcome to Ara for all learners, staff and whānau (family). The whakatau is a welcoming ceremony, similar to a pōwhiri, involving mihi (speeches), waiata (song) and will conclude with kai timotimo (light refreshments).

Click [here](#) to find out when the whakatau will be.

International learners

You will be invited to an international orientation as well as the programme orientation. You should attend both.

Korero Nui - Important Information

Programme Information Handbook

This handbook includes detail and formal language.

Here is a summary of the following pages:

- The detail and the rules about the qualification you have enrolled in
- Ara expectations about how you will behave and what your rights are
- How Ara checks that you are a genuine student (like your attendance)
- A quick access guide to getting support
- How assessments work and the grades that are used
- The assessment regulations that could support you to pass and what forms to use (resits, remarks and more)
- Getting your results and going to graduation
- Key academic policies
- Health and safety information related to your study
- any after hours access arrangements

Ask your tutor if you need help to find the information you are looking for.

Learner Information Handbook

We recommend that you read your Programme Handbook in conjunction with the [Learner Information Handbook](#) (also available on MyAra) which has more detailed information about support and services available to learners at Ara.

Attendance

Experience has shown that if you attend regularly and participate in the class activities and assessments you are more likely to succeed. Full attendance and commitment are encouraged. You are expected to be punctual and must comply with the various behaviour and safety requirements of classrooms, workshops and labs.

For an international learner satisfactory progress is defined as 100% attendance and successful completion of 75% or more of your courses.

**Let Ara know when you are absent from classes or if you are sick.
Contact your tutor or advise the Faculty by emailing
schoolofenglish@ara.ac.nz**

Non-Engagement

Ara has processes to deal with learners who formally enrol here but do not “engage” with their studies. That is, if you do not attend and/or participate and/or submit assignments and/or sit assessments or only attend briefly or spasmodically and/or do not engage significantly.

Our Faculty process follows these steps if you are a no-show at the start of teaching:

- 1** We will attempt to contact you 3 times and if we are not successful, we will withdraw you (1) within 3 days if there is a waitlist of other learners who want to enrol, or (2) within 10% of the length of your enrolment (often 1 – 2 weeks)

- 2** You will receive an email, text or phone call asking why you have not been attending

- 3** There will be no academic or financial penalty from Ara but you could be overpaid by StudyLink

Our Faculty process follows these steps for disengaged learners:

- 1** The registers are checked and if your engagement and attendance is a concern, we will talk with you

- 2** You will receive an email or phone call asking why you have not been attending. You may receive a non-engagement letter

- 3** We will attempt to contact you 3 times

- 4** You may be placed on a Formal Academic Contract or withdrawn

- 5** You will receive a WD grade (after 10% of the duration of the course) or a DNC grade (after 80% of the duration of the course)

If you are struggling with attendance, we fully encourage you to talk this over as soon as possible with your tutor.

Drugs and Alcohol

In line with the expectations of many workplaces, Ara has procedures to ensure the health and safety of all learners, staff and visitors, while undertaking Ara activities.

Ara has **zero tolerance** for the misuse or abuse of alcohol and/or illegal/controlled drugs, possession and/or use of illegal/controlled drugs/substances, or intoxication on all campuses/learning sites.

Many learning activities involve high-risk situations where clear thinking, decision-making, and machinery operation need to be conducted safely. These activities cannot be compromised.

You can download the policy from [CPP506 Drugs & Alcohol Policy](#)

Artificial Intelligence (AI) Tools

When submitting work for assessment, you must adhere to Ara's Assessment and Academic Misconduct policies and not present AI-produced work as your own work. Learning Services have resources to help you learn to paraphrase or reference another person's work to avoid academic misconduct.

For more detail, please read the **Kā ture me kā tikaka - Policies & Procedures** section of this handbook.

Kā Raki whakahirahira - Important Dates

SEMESTER TWO

DATES

TERM 3

20 July - 25 September

South Canterbury Anniversary

Monday 28 September

TERM 4

12 October - 4 December

Labour Day

Monday 26 October

Canterbury Anniversary

Friday 13 November

SEPTEMBER INTAKE

DATES

September Intake

**14 September 2026 -
29 January 2027**

Semester Break

21 December 2026 -
08 January 2027

Kā whakapātaka - Contact Details

Key Staff

Heather Knox

Portfolio Manager

Phone: (03) 940 8742

Room: A109

Heather.Knox@ara.ac.nz



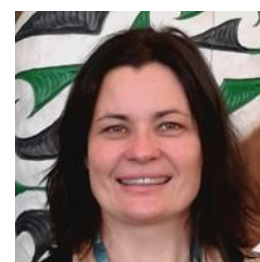
Fiona Miller

NZCEL Programmes Co-ordinator

Phone: (03) 940 8453

Room: A108

Fiona.Miller@ara.ac.nz



Geraldine Paquier

Operations Administrator

Phone: (03) 940 7546

Room: A120 / TV105 (Christchurch)

Geraldine.Paquier@ara.ac.nz



Katherine Harris

Operations Administrator

Phone: (03) 687 1807

Room: Student Central (Timaru)

Katherine.Harris@ara.ac.nz

Student Advisors (Domestic / International)

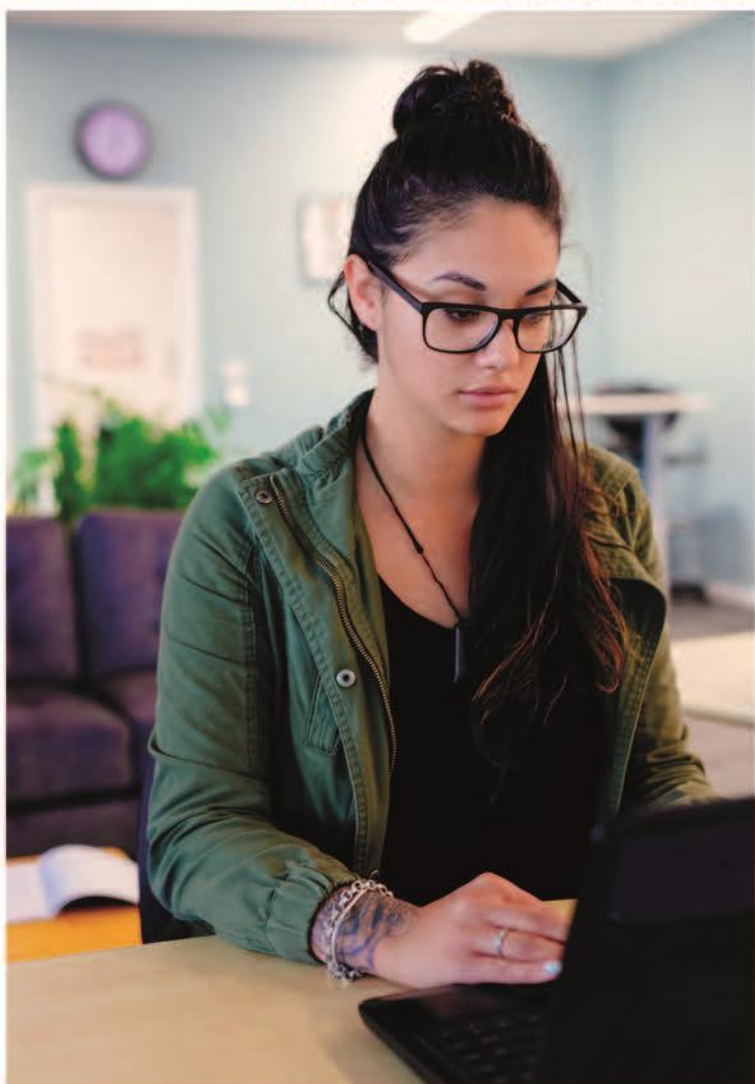
Student Central

X Block – Madras Street Campus

TA Block – Timaru Campus

Learnersupport@ara.ac.nz

Tō Akoako Your study



Taipitopito akoraka - Programme Details

Programme Aims

NZ1879 New Zealand Certificate in English Language (Foundation) (Level 1)

To enable learners to communicate with support in very basic, familiar and everyday situations at CEFR A1.

NZ1880 New Zealand Certificate in English Language (Level 1)

To enable learners to communicate with support in basic, familiar and everyday situations at CEFR A2.

NZ1881 New Zealand Certificate in English Language (Level 2)

To enable learners to communicate in familiar situations with some independence at CEFR mid B1.

NZ1882 New Zealand Certificate in English Language (General) (Level 3)

To enable learners to communicate in most familiar situations with increasing independence and fluency at CEFR high B1.

NZ3667 New Zealand Certificate in English Language (Applied) (Level 3) – Community pathway or Academic pathway

To enable learners to communicate with increasing independence and fluency in academic, community and/or employment English language contexts at CEFR low B2.

NZ3669 New Zealand Certificate in English Language (General) (Level 4)

To enable learners to communicate independently and effectively in familiar and some unfamiliar situations, with fluency and flexibility in community/societal settings at CEFR mid B2.

NZ1883 New Zealand Certificate in English Language (Academic) (Level 4)

To enable learners to communicate independently and effectively in familiar and some unfamiliar situations, with fluency and flexibility in academic contexts at CEFR mid B2.

NZ1884 New Zealand Certificate in English Language (Academic) (Level 5)

To enable learners to communicate independently and effectively in a wide range of familiar and unfamiliar situations, with fluency and flexibility in academic contexts at CEFR high B2.

Graduate Profiles

New Zealand Certificate in English Language (Foundation) (Level 1) – NZ1879

Graduates of this qualification will be able to:

- Understand familiar spoken words and very basic phrases for the most common everyday situations.
- Participate in simple spoken discourse with familiar people on familiar and personal topics in areas of most immediate need.
- Understand familiar written words and phrases for the most common everyday situations.
- Write simple isolated phrases and sentences giving personal information.

Employment pathways

Holders of this certificate will have the English language skills to work in positions in which minimal communication is required, and instructions and commands may be accompanied by supporting visual aids, such as gestures and graphics.

Education pathways

This certificate can lead to the New Zealand Certificate in English Language (Level 1) [Ref: 1880].

New Zealand Certificate in English Language (Level 1) – NZ1880

Graduates of this qualification will be able to:

- Understand frequently used spoken expressions and simple sentences in areas of most immediate personal relevance in predictable everyday situations.
- Participate in short spoken discourse of immediate personal relevance for social and transactional purposes in predictable everyday situations.

- Understand specific predictable information in simple everyday written texts.
- Write short simple texts relating to personal and everyday topics relevant to daily life.

Employment pathways

Holders of this certificate will have the English language skills to work in positions that require:

- basic, short, memorised phrases.
- understanding of short, basic predictable spoken phrases.
- understanding of a small range of individual words.

Education pathways

This certificate builds on the New Zealand Certificate in English Language (Foundation Level 1) and can lead to the New Zealand Certificate in English Language (Level 2) [Ref: 1881].

New Zealand Certificate in English Language (Level 2) – NZ1881

Graduates of this qualification will be able to:

- Understand the gist and key points in straightforward oral texts and exchanges on familiar and routine topics.
- Participate in straightforward spoken interactions on familiar and routine topics.
- Understand the gist and key points in straightforward written texts on familiar and routine topics.
- Write simple, connected texts on familiar topics.

Employment pathways

Holders of this certificate will have the English language skills to work in positions that require:

- simple face to face interpersonal communication.
- understanding of simple spoken and written instructions and descriptions.
- completion of simple forms relevant to workplace contexts.

Education pathways

This certificate builds on the New Zealand Certificate in English Language (Level 1) and can lead to the New Zealand Certificate in English Language (General/Workplace/ Academic) (Level 3) [Ref: 1882].

New Zealand Certificate in English Language (General) (Level 3) – NZ1882

Graduates of this qualification will be able to:

- Understand main points and some specific details of oral texts on reasonably familiar topics.
- Participate with some confidence in spoken discourse on reasonably familiar topics.
- Understand main points and some specific details of written texts on reasonably familiar topics.
- Write connected texts on reasonably familiar topics.

Employment pathways

Holders of this certificate will have the English language skills to work in positions that require:

- face to face interpersonal communication.
- understanding of basic, context-specific texts.
- simple, context-specific record-keeping.
- interaction in a supervised team.

Education pathways

This certificate builds on the New Zealand Certificate in English Language (Level 2) [Ref: 1881] and can lead to New Zealand Certificate in English Language (Applied) (Level 3) [Ref: 3667]. This certificate facilitates meeting the language requirements for other study or training programmes/courses at New Zealand Qualifications Framework Level 3 or below.

New Zealand Certificate in English Language (Applied) (Level 3) – NZ3667

Graduates of this qualification will be able to:

- Understand main points and some specific details of moderately complex oral texts on reasonably familiar topics relevant to the applied context.
- Participate with some confidence in sustained spoken discourse on reasonably familiar topics relevant to the applied context.
- Understand main points and some specific details of moderately complex written texts on reasonably familiar topics relevant to the applied context.
- Write clear connected texts on reasonably familiar topics relevant to the applied context.

Employment pathways

Graduates of the New Zealand Certificate in English Language (Applied) (Level 3) [Ref: 3667] will have the English language skills to work in positions that require:

- participation in face-to-face interpersonal communication.
- response to basic, context-specific texts.
- production of simple, context-specific record-keeping.

Education pathways

This certificate builds on the New Zealand Certificate in English Language (General) (Level 3) [Ref: 1882] and can lead to:

- New Zealand Certificate in English Language (General) (Level 4) [Ref: 3669].
- New Zealand Certificate in English Language (Employment) (Level 4) [Ref: 3668].
- New Zealand Certificate in English Language (Academic) (Level 4) [Ref: 1883]. This certificate facilitates meeting the language requirements for other study or training programmes/courses at New Zealand Qualifications Framework Level 4 or below.

New Zealand Certificate in English Language (General) (Level 4) – NZ3669

Graduates of this qualification will be able to:

- Understand main ideas and supporting details of moderately complex oral texts for social and transactional purposes.
- Participate effectively in sustained spoken discourse for social and transactional purposes.
- Understand main ideas and supporting details of moderately complex written texts of a general nature.
- Write detailed, developed, moderately complex texts of a general nature.

Employment pathways

Graduates of the New Zealand Certificate in English Language (General) (Level 4) [Ref: 3669] will have the English language skills to work in positions that require:

- interpersonal communication.
- understanding of context-specific texts of a more general nature.
- writing transactional exchanges, records, reports and letters.

- interaction in a team.

Education pathways

This certificate builds on the New Zealand Certificate in English Language (Applied) (Level 3) [Ref: 3667] and can lead to:

- New Zealand Certificate in English Language (Academic) (Level 5) [Ref: 1884]

This certificate may facilitate meeting the language requirements for vocational programmes/courses and/or a non-specialised fields of study requiring lower and/or New Zealand Qualifications Framework level 5, for entrance, depending on the focus of the programme leading to this qualification.

New Zealand Certificate in English Language (Academic) (Level 4) – NZ1883

Graduates of this qualification will be able to:

- Understand main ideas and supporting details of moderately complex oral texts for social and transactional purposes.
- Participate effectively in sustained spoken discourse for social and transactional purposes.
- Understand main ideas and supporting details of moderately complex written texts of a general nature.
- Write detailed, developed, moderately complex texts of a general nature.

Employment pathways

Graduates of the New Zealand Certificate in English Language (Academic) (Level 4) [Ref: 1883] will have the English language skills to work in positions that require:

- interpersonal communication.
- understanding of context-specific texts of a more academic nature.
- writing records and reports.
- interaction in a team.

Education pathways

This certificate builds on the New Zealand Certificate in English Language (Applied) (Level 3) [Ref: 3667] and can lead to:

- New Zealand Certificate in English Language (Academic) (Level 5) [Ref: 1884].

This certificate may facilitate meeting the language requirements for vocational and undergraduate programmes/courses and specialised fields of study requiring lower and/or New Zealand Qualifications Framework Level 5, for entrance, depending on the focus of the programme leading to this qualification.

New Zealand Certificate in English Language (Academic) (Level 5) – NZ1884

Graduates of this qualification will be able to:

- Understand extended, complex oral academic texts on a wide range of topics.
- Participate flexibly and effectively in extended spoken academic discourse on a wide range of topics.
- Understand extended, complex written academic texts on a wide range of topics.
- Write well structured, sophisticated, extended academic texts on a wide range of topics.

Employment pathways

Holders of this advanced certificate will have the English language skills to work in positions that require:

- complex interpersonal communication.
- understanding of complex context-specific professional and/or technical texts.
- writing complex, context-specific communications.
- full participation, interaction and initiative in a team.

The New Zealand Certificate in English Language (Academic/Professional) (Level 5) is designed to equip learners with the English language proficiency to enable them to seek professional registration with regulatory standard bodies.

Education pathways

This advanced certificate builds on the New Zealand Certificate in English Language (General/Workplace/Academic) (Level 4), and facilitates meeting the language requirements for:

- programmes/courses that are linguistically demanding and/or a specialised field of study.
- most postgraduate programmes/courses, depending on the focus of the programme leading to this qualification.

Programme Regulations

New Zealand Certificates in English Language (Levels 1 to 5)

The New Zealand Certificates in English Language (Levels 1 to 5) are six-month full time equivalent programmes of study, each requiring the successful completion of 60 course credits.

The programmes each comprise 60 compulsory course credits at the programme level.

Minimum completion time: None specified (allowing for Recognition of Prior Learning, Cross Credit and Credit Transfer).

Maximum completion time: two years for each programme. Any extension to this period requires a written application from the Portfolio Manager or delegate.

Mahere Ako - Programme Structure

Programme Matrix

Use the following table as a guide to the courses in your programme. You can find out how many credits each course is worth, and how many credits and courses you need to do to complete your study.

Code	Course Title	Level	Credits	Course Factor
NZ1879 New Zealand Certificate in English Language (Foundation) (Level 1)				
EALS100	English Speaking 1A	1	15	0.1250
EALL100	English Listening 1A	1	15	0.1250
EALR100	English Reading 1A	1	15	0.1250
EALW100	English Writing 1A	1	15	0.1250
Total			60	0.5000
NZ1880 New Zealand Certificate in English Language (Level 1)				
EALS101	English Speaking 1B	1	15	0.1250
EALL101	English Listening 1B	1	15	0.1250
EALR101	English Reading 1B	1	15	0.1250
EALW101	English Writing 1B	1	15	0.1250
Total			60	0.5000
NZ1881 New Zealand Certificate in English Language (Level 2)				
EALS200	English Speaking 2	2	15	0.1250
EALL200	English Listening 2	2	15	0.1250
EALR200	English Reading 2	2	15	0.1250
EALW200	English Writing 2	2	15	0.1250
Total			60	0.5000

Code	Course Title	Level	Credits	Course Factor
NZ1882 New Zealand Certificate in English Language General) (Level 3)				
EALS300	English General Speaking 3	3	15	0.1250
EALL300	English General Listening 3	3	15	0.1250
EALR300	English General Reading 3	3	15	0.1250
EALW300	English General Writing 3	3	15	0.1250
Total			60	0.5000
NZ3667 New Zealand Certificate in English Language (Applied) (Level 3)				
Community Pathway:				
EALS301	English Applied Community Speaking 3	3	15	0.1250
EALL301	English Applied Community Listening 3	3	15	0.1250
EALR301	English Applied Community Reading 3	3	15	0.1250
EALW301	English Applied Community Writing 3	3	15	0.1250
Or Academic Pathway:				
EALS302	English Applied Academic Speaking 3	3	15	0.1250
EALL302	English Applied Academic Listening 3	3	15	0.1250
EALR302	English Applied Academic Reading 3	3	15	0.1250
EALW302	English Applied Academic Writing 3	3	15	0.1250
Total			60	0.5000

Code	Course Title	Level	Credits	Course Factor
NZ3669 New Zealand Certificate in English Language (General) (Level 4)				
EALS400	English General Speaking 4	4	15	0.1250
EALL400	English General Listening 4	4	15	0.1250
EALR400	English General Reading 4	4	15	0.1250
EALW400	English General Writing 4	4	15	0.1250
Total			60	0.5000
NZ1883 New Zealand Certificate in English Language (Academic) (Level 4)				
EALS401	English Academic Speaking 4	4	15	0.1250
EALL401	English Academic Listening 4	4	15	0.1250
EALR401	English Academic Reading 4	4	15	0.1250
EALW401	English Academic Writing 4	4	15	0.1250
Total			60	0.5000
NZ1884 New Zealand Certificate in English Language (Professional / Academic) (Level 5)				
EALS500	English Speaking 5	5	15	0.1250
EALL500	English Listening 5	5	15	0.1250
EALR500	English Reading 5	5	15	0.1250
EALW500	English Writing 5	5	15	0.1250
Total			60	0.5000

List of Unit Standards Assessed

NZ1883 New Zealand Certificate in English (Academic) Level 4

US no.	Title	Version no.	NZQF Credits	Level
22749	Write texts under test conditions in English for academic purposes	2	5	4
22750	Write a crafted text using researched material in English for an academic purpose	2	6	4
22751	Read and process information in English for academic purposes	2	6	4
22891	Deliver an oral presentation in English for an academic purpose	2	5	4
22892	Demonstrate understanding of spoken texts and process information in English for academic purposes	2	5	4

Our Access to Your Work

We may contact you to discuss the right to copy, reproduce, and use your learner work for promotional and education purposes for Ara.

Kā tika me kā kaweka o te tauira - Learner Responsibilities and Rights

Learner Responsibilities and Rights

The Ara community consists of a diverse range of people and cultures, and we respect all members of our community. Our aim is to have a community where learners respect themselves and others, a community where healthy social interactions and academic pursuits are expected. To create and maintain the best possible teaching and learning environment, you are protected by basic rights and are expected to respect the rights and responsibilities of others.

Useful Contacts:

Independent Student Advocate: Duncan Dunbar.

Email: duncan.dunbar@ara.ac.nz | Mobile: 027 273 6246

Student Voice Co-ordinator:

Email: studentvoice@ara.ac.nz

Your Responsibilities as a Learner

As a learner here, Ara expects you to:

Behave safely

- Take care when using equipment and facilities.
- Wear suitable clothing.
- Follow health and safety guidelines and instructions.
- Not endanger yourself or others.
- Follow relevant professional guidelines.
- Ensure you are not intoxicated or under the influence of drugs on Ara premises or when involved in Ara related activities both formal and informal, with your programme, field trips, internships etc.

Respect others

- Be sensitive to personal, social, and cultural differences.
- Respect the needs, rights, and freedoms of others.
- Help to uphold the integrity of Ara qualifications by discouraging/reporting dishonest practices.

Observe Ara rules

- Behave appropriately for a tertiary education environment.
- Genuinely attempt to meet all course requirements including financial obligations.
- Comply with visa requirements.
- Be honest when completing assignments/other assessments.
- Comply with requirements of programme handbooks.
- Follow Ara policies and regulations see [Ara Policy Library](#)

Your Rights as a Learner

Ara will protect your right to fairness. You have a right to:

Fairness

- Open and accurate information.
- Fair evaluation and assessment.
- Have any problems handled as quickly as is practical and consistent with 'natural justice'.
- Personal privacy.
- Support, representation, and advocacy.

Ara Respects your right to:

- Academic freedom, defined as 'freedom, within the law, to question and test received wisdom, to put forward new ideas and to state controversial or unpopular opinions.' (Education and Training Act 2020)
- Freedom from any form of harassment, bullying, or unjust discrimination.
- Respect for personal, social, and cultural differences.
- Representation in the development, implementation, and review of policies.

Ara will protect your right to Standards:

- Study programmes that meet internal and external standards for approval and registration.
- To have competent and effective teachers.
- Appropriate support services delivered in a professional manner.
- Facilities and resources that meet or exceed Health & Safety legislation.

Concerns / Complaints:

Your rights will be upheld by Ara management. If you think they have been infringed, in the first instance please contact your course tutor. If it is not appropriate to contact your tutor regarding your complaint, or the matter has not been resolved, please contact your Portfolio Manager/Programme Manager or Student Advocate and/or the Student Life Team.

Unacceptable Behaviour for Learners, or Visitors at Ara

The following are examples of behaviour which are not acceptable for anyone (learners, or visitors), at Ara or involved in Ara related activities:

- Breaking any NZ law (e.g., assault, theft).
- Any form of cheating (including plagiarism and other dishonest practices).
- Misuse of technology, software, hardware, or communication systems provided by Ara (refer Ara Code of Conduct for ICT Users in particular).
- Any form of harassment, bullying, or unjust discrimination including social media.
- Unacceptable sexual behaviour (e.g., sexual harassment, accessing pornography/other restricted material).
- Misuse of alcohol, drugs or other substances affecting behaviour, health, or safety.
- Smoking (including vaping) on Ara campuses. (Ara is a smoke free campus).
- Violence or threats of violence.
- Vandalism or other abuse of facilities and buildings.
- Disruptive behaviour in class (e.g., arriving late, use of any electronic device, interfering with the learning of other individuals).
- Inductions (informal) are not permitted at Ōtautahi House or on other Ara premises and are strongly and expressly discouraged by Ara.
- The above is not an exhaustive list of unacceptable behaviours. Where appropriate, Ara reserves the right to contact or report to external authorities.

Academic staff have the responsibility to maintain a safe and effective learning environment.

They may ask you to leave the class if your behaviour indicates limited ability to be safe, disturbance to others learning, or puts others at risk.

Ara takes this code of conduct seriously. Your marks, reports, and references may include an assessment of your behaviour, as well as your educational achievement. Serious infringement may lead to probation, suspension, or cancellation of a current enrolment and/or refusal of a future enrolment (see relevant policies). This may be referred to an appropriate external authority e.g., NZ Police

Learner Behaviour in class / classroom maintenance

Be respectful of other learners and the classroom environment, following classroom specific rules and requirements. To avoid any distractions, you must ensure any electronic device you have on you/with you is diverted, not set to ring, or switched off. Both staff and students have a responsibility to ensure this happens

Dress Code

There is no written dress code, but you are expected to attend classes dressed in a way which is generally acceptable. However, you're expected to be "dressed for the occasion" when going on a site visit or undertaking a Cooperative Education Project. You may be prevented from going on site visits if the staff member is of the opinion that you're not dressed for the occasion. In specific courses, a "dress code" and standard is required. These will be detailed in the Programme Handbook and Course Outline.

Kā Aromata Kā Taunakitaka Mōu – Support for You

Quick reference – Where to find help if you have feedback or want to raise an issue

The Education (Pastoral Care of Tertiary and International Learners) Code of Practice sets out the expectations that tertiary education organisations need to consider how their overall systems and resources support learners' wellbeing and safety.

For more detailed information on the code, and support areas listed below, please refer to the [Learner Information Handbook](#) on MyAra

Support Area	Details	People	Links
Faculty Staff	This team are your first port of call for issues impacting your ability to study	Tutor Programme Leader Programme Manager Portfolio Manager	
Student Reps	Student reps are invited to attend student rep meetings within your department where they can raise issues on your behalf	Student Voice Posters of your student reps are displayed in your department	Student Voice
Student Services	Ara offers a wide range of student services	Student Advisors Health Centre Student Voice	Student Support
Te Pae Ora	A wellbeing hub for ākonga		Te Pae Ora Te Pūkenga
Independent Student Advocate	Student Advocacy is available to assist you if you are facing difficulties within	Duncan Dunbar 027 273 6246 Duncan.Dunbar@ara.ac.nz X106 (Rakaia Centre)	Student Advocacy

Support Area	Details	People	Links
Complaints Process	or beyond Ara that could affect your study		
	Ara has a process to support you and respond if you have a concern or complaint about a course, tutor, or another aspect of your programme	Complaints Co-ordinator	CPP117-Raising-problems-or-complaints CPP117a-Raising-problems-or-complaints-form
Safeplace	Safeplace is the tool we use to report risks, accidents and other incidents	Safety & Wellbeing Co-ordinator Safety & Wellbeing Business Partner	SafePlace FAQ for Learners
Important Policies	All Ara Corporate and Academic Policies can be found at Ara Policy Library		Student Rights and Responsibilities Addressing Bullying, Harassment and Discrimination

Kā Aromatawai - Assessments

Assessment Information

At the start of each course, you will be given a **Course Outline**. Before each assessment you will be given an **assessment brief**. This will show:

- The number, type, and due dates for all assessments, including tests and assignments, and will give you details on:
- The weighting of each assessment in your course that contributes to your final grade, if applicable.
- The assessment policy for resits, second results and alternative assessments, if they are different from the policies in this document.
- The time frame for getting your marked assessments back from tutors, if they are different from those stated in this document.
- The penalties for handing assessments in late, if they are different from those stated in this document. These may be different for each course.

If you do not receive this information, talk to the course tutor or Manager/Programme Leader.

Assessment Types

Formative assessment Verbal and written feedback that takes place throughout classes and the programme.

Summative assessment Assessments throughout the year that are based on learning outcomes for the course and determine how well you have achieved each outcome. You are given grades and written feedback. These assessments may include practical tests and projects.

The contents of the course work will be explained by the tutor for each course. If at any point your tutor or Programme Leader is concerned about your progress, they will let you know.

Academic Integrity

Ara requires learners to be honest and act with integrity in their learning and assessments.

You are required to:

- present your own original work for assessment
- acknowledge contributions from other sources by using the referencing format required for the programme (failure to do this correctly may be regarded as plagiarism); this includes direct copying, paraphrasing, summarising, and the rearranging of, another person's words or idea/s
- not cheat in tests or examinations
- ensure you follow all instructions and the correct procedures (e.g., no use of mobile phones or personal electronic devices)
- not enter into any agreements with other learners to collude on assignments
- collaborate only as permitted
- not over- or misrepresent the individual contributions of members of any group assignment
- not knowingly help others to cheat
- not present another person's assessment as your own (this includes purchased assessments)
- not act or behave in a way that prevents others from completing their assessments
- keep written and electronic work secure to prevent others from accessing and copying work.

Any exceptions to the above are clearly stated in the information and requirements for the course.

By enrolling at Ara, ākongā agree to your work being reviewed by various means to confirm an assessment is your own work. This includes the use of similarity detection software.

Any breaches of academic integrity follow the process set out in the academic integrity procedures.

Submitting Your Work

Your tutors will let you know if they have guidelines for presenting your assessments and how to submit your work. Use a computer to create your assessments.

You may be required to submit your work manually or electronically. If you submit your work electronically, keep a copy until your official results are published at the end of the semester. If you have any questions, contact your tutor.

Note: Ara uses, as part of its assessment processes, electronic plagiarism detection. You will, from time to time, be required to submit assessments for scanning. Electronic copies of assessments must be retained by you until the official results are published after the end of semester or year.

Quality Assurance

Your assessments and exam scripts may be used for internal and external moderation, monitoring, programme reviews, aegrotats, and the resolution of academic appeals and complaints. This helps Ara meet internal and external academic quality assurance requirements. If your assessments are used this way, before they are used, any information that could reasonably be expected to identify you will be removed.

The Grade Scale

The various assessments within a course will be combined according to the weightings shown in the course descriptor, and a grade for the course as a whole will be assigned from the table shown below. A "C-" grade and above represents a pass for the course.

The following grade scale (M1) will be used for all courses on the programmes unless advised otherwise in the course descriptor:

Grade	Result	Definition
P	Competent	Competent/Mastery
#P	Pass	Pass on resit
P~	Pass	Pass on second result
NC	Not Competent	Not Competent/No Credit

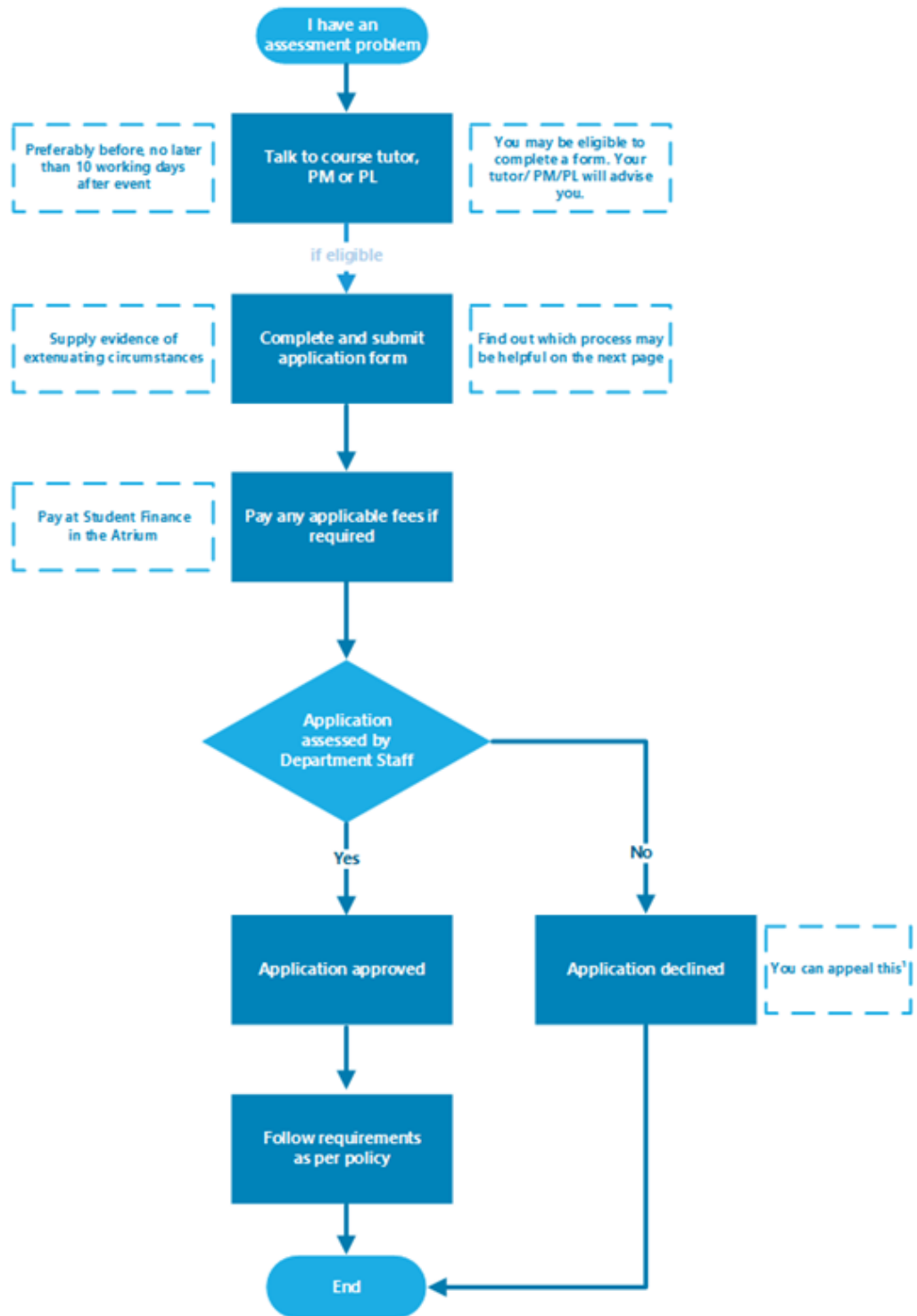
Other Grades

Other grades that may be awarded for particular circumstances in achievement-based courses include:

Course result	Grade	Description
Credit Transfer	CT	Course credit awarded by credit transfer
Cross Credit	CC	Course credit awarded by cross credit
Recognition of Prior Learning	P	Course credit awarded by Recognition of Prior Learning
Unfinished at time of reporting	U	Did not complete course requirements
Withdrawn	W	Formal withdrawal within the non-academic penalty period

Kā tikaka aromatawai - Assessment Regulations

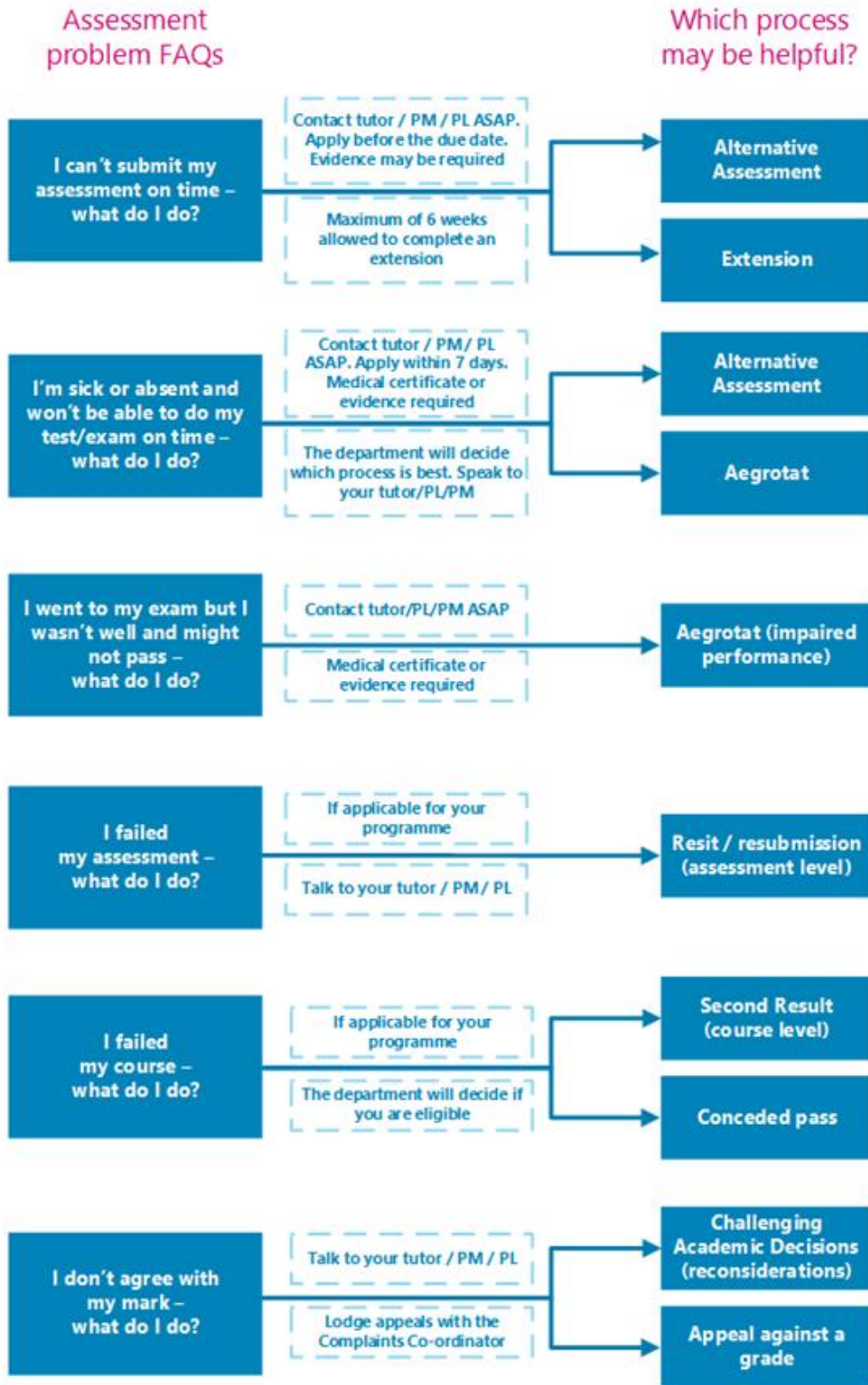
Regulations Flowchart



¹The student lodges the appeal in writing with the Complaints Co-ordinator with a copy to the Head of Department

Which form do I use?

* Always speak to your tutor, Programme Manager (PM) or Programme Leader (PL) to see if you are eligible



Extensions

If you anticipate difficulty in submitting assessments by the due time and date you may be able to request an extension.

For information about how to apply for an extension of time, [Assessment Policy](#) - scroll down and find **3.14 Extensions**. You can download the form from [Application for Extension of Time](#).

Resits or resubmission of assessment tasks

If you have submitted and failed an assessment task you may apply for a resubmission resit.

For information about how to apply for a resit or resubmission, see [Assessment Policy](#) - scroll down and find **3.15 Resits and Resubmissions**. You can download the form from [Application for Resit or Resubmission](#).

Second Results (course level)

If you receive a fail grade in a course, you may be able to apply for a reassessment of the course.

For information about how to apply for a second result, see [Assessment Policy](#) - scroll down and find **3.16 Second Results**. You can download the form from [Application for Second Result](#).

Marks Carried Forward

You may be able to apply to carry marks forward for completed assessments to the next available occurrence of the course and not redo those assessments.

For information about how to apply for marks carried forward, see [Assessment Policy](#) - scroll down and find **3.18 Marks Carried Forward**. You can download the form from [Marks Carried Forward Application form](#).

Supported assessment

You may be able to apply for special assistance in order to undertake an assessment.

For more information about how to apply for additional assessment arrangements for disabled learners, see [Assessment Policy](#) - scroll down and

find **3.19 Procedures for additional assessment arrangements for disabled learners.**

Recognising Prior Knowledge and Skills

If you believe that a course or unit standard you have previously completed at a recognised educational institution, or work/life experience, may be relevant to the qualification you are studying, you could apply for credit recognition.

For information about how to apply for credit recognition, see [Credit Recognition](#) You can download the form from [Credit Recognition Application](#).

Alternative Assessments

If you are unable to sit a test or exam on the scheduled date, or complete an assessment on the due date, you may be able to apply for an alternative assessment.

For information about how to apply for an alternative assessment see [Assessment Policy](#) - scroll down and find **3.13 Alternative Assessment Arrangements**. You can download the form from [Application for Alternative Time for Test / Exam](#).

Aegrotat

You may be able to apply for an aegrotat when illness, injury, bereavement, childbirth, or unforeseen critical circumstances occur on or immediately prior to the day of assessment and prevent you from attending the assessment or seriously impair your performance during the assessment itself.

For information about these regulations, see [Aegrotat Pass Regulations](#) You can download the form from [Aegrotat Application](#) and the Practitioner Statement form from [Aegrotat Practitioner Statement](#).

Reconsideration of Assessment Decisions

If you have reason to believe that the grade or mark for a particular assessment is incorrect you may apply for a reconsideration.

For information about challenging academic decisions (reconsideration), [Assessment Policy](#) - scroll down and find **3.20 Reconsiderations and Appeals**. You can also refer to [Reconsiderations and Appeals](#).

Reconsideration of a Course Final Grade

If you consider that the outcome of the reconsideration process is incorrect or unfair, or a reconsideration is not available, you may appeal against the final grade awarded.

For information about challenging academic decisions (reconsideration), [Assessment Policy](#) - scroll down and find **3.20 Reconsiderations and Appeals**. You can also refer to [Reconsiderations and Appeals](#).

Appeal of Reconsideration Decision

If you consider that the outcome of the reconsideration process is incorrect or unfair, or a reconsideration is not available, you may appeal against the final grade awarded.

For information about challenging academic decisions (reconsideration), see [Assessment Policy](#) - scroll down and find **3.20 Reconsiderations and Appeals**. You can also refer to [Reconsiderations and Appeals](#).

Conceded Pass

You may qualify for a conceded pass if you marginally fail a course.

For information about conceded passes, see [Assessment Policy](#) - scroll down and find **3.17 Conceded Pass**.

Kā putaka me te Whakapōtaetaka - Results & Graduation

Accessing Your Results

Results of individual assessments will be made available to you within fifteen (15) working days of your assessment due date.

These results may be returned to you in class or online. Final grades for each course will be available online within fifteen (15) working days of the end date of the course and accessible through [MyAra](#) or through the My Ara app.

Any results displayed publicly will use unique identifiers such as student ID numbers, not student names.

Note: Staff members are under no obligation to advise you of your final grade for a course. After you have completed all the assessments in a course, we ask that you allow the staff time to complete the marking. At the end of semester staff members are under great pressure to submit final results to Academic Records so that they can be processed and then made available to all learners as soon as possible.

Academic Transcripts

If you require your results to be printed, visit Academic Records in A121 or email academic.records@ara.ac.nz to request a transcript.

Exam Scripts and Assessments

Your department will have a process to make assessments and marked scripts for those courses with major final exams available for you to check after results are published (specific dates will be advertised to learners at the end of each semester). During that time, you may request copies, and you may request remarks and/or reconsideration of your assessment. Original assessments and scripts may be destroyed one year following the completion of the assessment.

Note: Resits must be applied for within 5 days of the date your results are published on MyAra. If you take away an original examination script you forgo the right to apply for a recount or remark of the script or an appeal against the grade, so please check the marks you have been allocated and if you have any concerns speak to your tutor immediately.

Please note that in order to meet internal and external academic quality assurance requirements, learner assessments and examination scripts may be used for the purposes of:

- internal and external moderation.
- programme review.
- aegrotats (if available).
- resolution of academic appeals and complaints.

Assessments used for these purposes will have information, which could reasonably be expected to identify the individual, removed before they are copied and used.

Receiving Your Qualification

Once you have successfully completed your approved programme of study you will receive a notification advising you that your certificate is ready and will be posted to you.

Note: Please make sure your address details are up to date when you finish studying. Advise Academic Records if you are updating your address details after you receive the notification, so the correct address is used.

Graduation

We hold several graduation ceremonies.

If you're eligible to graduate, you'll receive a communication from Ara advising you of this. You'll need to complete the online graduation form, by the date indicated, to register for your ceremony.

Note: If you believe you are entitled to graduate and do not hear from Ara please contact the Faculty Administrator or Academic Records.

For all information on graduation, including dates, please see [Graduation](#).

Kā ture me kā tikaka - Policies & Procedures

Academic Policies

All policies are accessible on the Ara website [Ara Policy Library](#). Ara provides a student advocacy service.

It is well known that people learn better when they work together, and this is encouraged, but when it comes to assessment, collaboration (working together) is not permitted unless it is a formal part of the assignment set by the tutor(s). Each learner is also responsible for making sure his/her work is not able to be copied by others. Sharing or comparing tests, exams and assessments is prohibited and, if detected, will be treated as “academic misconduct”.

Academic Support and Progression

Support is available if you, as a learner, are having difficulty meeting academic standards or you seek guidance, assistance or support with study related matters.

If you are not achieving satisfactorily, you will receive specifically targeted advice and assistance at an early stage.

Academic staff members will work with you if you are not meeting academic standards to document and implement a plan. This will include identifying and monitoring goals, expected academic progress, timelines and support.

If satisfactory progress is not made then you will be invited to meet with the Portfolio Manager or his/her delegate, who will explain the circumstances, discuss the consequences, and give you the opportunity to present your view of events leading up to the meeting. Depending on the outcome of the meeting, a Formal Academic Contract may be entered into.

Formal Academic Contract

If your progress as a learner in a current course is still considered by tutors to not be satisfactory you will be invited to a meeting and advised in writing by the Portfolio Manager or delegate.

The Formal Academic Contract will record the deficiencies or concerns, the progress which must be met, any assistance available, the time within which

progress or change must be demonstrated, and the method and criteria by which such progress or change will be measured.

For more information about Academic Support and Progression, see [Academic Support and Progression](#) - scroll down and find **3.3 Formal Academic Contract**.

Academic Misconduct

Cheating, plagiarism and other dishonest academic practices have serious consequences in this programme and if you fail to meet academic standards you, as a learner, may be subject to educative processes or penalties.

Plagiarism

Plagiarism is copying, taking or using someone else's work or ideas and presenting them as if they were your own original work or thought, without clear acknowledgement of the actual source.

Use of Artificial Intelligence (AI) Tools

Generative Artificial Intelligence (AI) services such as ChatGPT can be used for learning. When submitting work for assessment, you must adhere to Ara's Assessment and Academic Misconduct policies. In relation to AI, this means;

- you must not present any output from any AI services as your own work in your assessment.
- you must use your own words.
- if you paraphrase or quote from a source such as a textbook, website and AI service, you must reference correctly.

If you submit an assessment using content copied directly from an AI service without acknowledgement, it is a form of academic misconduct.

Cheating

Cheating is acting deceitfully or dishonestly to gain academic recognition or an academic result. Examples include copying answers from another person's work, taking useful information secretly into a test or exam, improperly accessing information about questions and/or answers, arranging for someone else to produce an assignment or to sit a test or exam.

Dishonest Academic Practice

Dishonest Academic Practice is any other act or omission that contravenes Ara academic requirements of a programme or course.

Educative Processes

These are actions designed to assist you, as a learner, in understanding the expected standards and skills needed to succeed and may include:

- a facilitated discussion with an appropriate staff member.
- a formal contract with Learning Services or other appropriate staff member for skills development including specific learning outcomes and timeframes.
- a requirement for additional work.
- a formal written warning, or a deduction of marks.

Penalties

These are actions designed to deter misconduct and/or deal with the consequences of it in a fair and appropriate way and may include:

- a decision not to mark or assess the work or record a mark/grade.
- formally recorded fail / zero for the work concerned which remains on your academic record.
- cancellation of credit already awarded if the academic misconduct is admitted/ established after assessments have been completed and recorded.
- formal notice indicating 'Intentional Plagiarism' (or other misconduct) placed on academic record for a specified period of time.
- formal written warning.
- probation or suspension from the programme or other penalty.

Learner Behaviour Management

If you are identified as a learner who displays unacceptable behaviour the department will monitor your progress and provide support at the earliest stage. This may include referral to Student Support Services to ensure additional support is provided to you.

If you do not respond you may be placed on a behaviour improvement plan This will include identifying, documenting, implementing, and monitoring goals, expected behavioural progress, timelines, and support. If you do not meet the outcomes outlined in the behaviour management plan, you may be moved to probation.

Probation

If your behaviour, as a learner, is unacceptable and of concern to staff or other learners, you will be advised of this in writing by the Portfolio Manager. This written warning is known as probation.

The written advice must briefly record the deficiencies or concerns, the progress or standards of behaviour which must be met, any assistance available, the time within which progress or change must be demonstrated, and the method and criteria by which such progress or change will be measured.

The progress or change required should be reasonable and the criteria for assessing whether the progress or change has been achieved should be easily understood and capable of being clearly demonstrated.

The written advice must include the warning that failure to make progress or achieve change may lead to suspension and/or cancellation of current enrolment(s) and/or refusal of future enrolment(s).

These requirements are known as the “terms and conditions of probation”.

For more information about probation, see [Probation](#) - scroll down and find **3.4 Probation**.

Exclusion

An exclusion may apply to one or more specified courses, a whole programme, or all enrolment at Ara. An exclusion may also apply to one or more specified services or facilities.

Suspension

Suspension is a short-term exclusion and is the formal process by which you, as a learner, are temporarily prohibited from attending classes in one or more courses and/or is refused access to one or more services/facilities provided by Ara. In serious circumstances a Trespass Notice may also be issued.

Cancellation of Enrolment

Ara may cancel your enrolment as a learner on any of the Education Act (1989) grounds:

- The person is not of good character.
- The person has been guilty of misconduct or a breach of discipline.

- The person is enrolled for full-time instruction in another institution or in a school.
- The person has made insufficient progress in the person's study or training after a reasonable trial at the institution or at another institution.

The decision to cancel or refuse an enrolment may be made only by the Operations Lead or nominee.

Failure to meet the terms and conditions of Academic Contract and/or probation may lead to exclusion.

When a cancellation is being considered, the Portfolio Manager must invite you to an interview.

Refusal of Future Enrolment

Any person may, for good reason and on good evidence, be refused enrolment at Ara generally or in a particular programme or course only by the Operations Lead or by his or her nominee under specific delegation.

Enrolment may be refused on any of the Education Act (1989) grounds.

Failure to meet the terms and conditions of probation may lead to exclusion.

The Portfolio Manager must forward a recommendation to the Operations Lead that the person's application(s) to enrol be refused. The recommendation must state which of the Education Act (1989) grounds is the basis of the recommendation and must include the supporting evidence.

For more information about Exclusion, including Appeal Rights and Other Rights, see [Exclusion](#) - scroll down and find **3.4 Refusal of Enrolment**.

Copyright and Ara Learners

Copyright legislation exists to protect copyright owners from unauthorised copying of their work (literary, dramatic, musical and artistic), and provides them with exclusive rights to how their work is used.

During your study with us we will endeavour to educate you on copyright use, including referencing, approved copying, and proper use of electronic material and downloadable music.

Infringement of copyright regulations may result in civil or criminal prosecution against you, as the learner, and/or Ara. Infringement by you, as a learner, may also be considered academic misconduct and result in penalties.

For more information about Copyright, see [Copyright](#).

Kā tū whare me kā rauemi

Facilities and resources



Kā tū whare me kā rauemi - Facilities & Resources

Health and Safety

Please refer to the [Learner Information Handbook](#) for general Health and Safety information and evacuation details. In an emergency advise a staff member, and if no one is available phone 111.

Noticeboards

Timetables and other student information, including employment opportunities, will be posted on the notice boards in A Block Foyer.

Appendix 1

Equipment Requirements


New Zealand Certificates in English Language | Levels 1-5




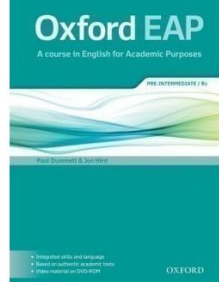

TEXTBOOKS

Refer to the following table to see if your course has a textbook requirement.

If your course requires a course textbook, you will need to buy this at the start of your course (within the first week of the course).

- You can buy your textbook at Ara. See Ana Neves in A115, ALX building (Christchurch) or Student Finance in Student Central (Timaru).
- You may be able to buy a second-hand book. See Millan Gurung in Student Advisory Service (X104 ALX building, Christchurch) if you want to buy or sell a second-hand textbook.
- If you buy the book online, make sure you get the correct edition. Check the ISBN number.
- Photocopied books are not permitted under New Zealand copyright laws.
- If you are a domestic learner and you cannot buy the book due to financial difficulties, see Millan Gurung in Student Advisory Service to discuss options.
- If you are a refugee background learner, see Millan Gurung in Student Advisory Service to discuss support available to you.

Level	Title	Textbook image	Approximate discounted price at Ara
NZ1879 Level 1 Foundation EALS100, EALL100, EALR100, EALW100	No textbook required		n/a
NZ1880 Level 1 EALS101, EALL101, EALR101, EALW101	English File, 4th edition, Elementary ISBN 9780194031592 Domestic learners: book provided International learners: to buy the book		\$74

Level	Title	Textbook image	Approximate discounted price at Ara
NZ1881 Level 2 EALS200, EALL200, EALR200, EALW200	English File, 4th Edition, Pre-Intermediate ISBN 9780194037419 Domestic learners: book provided International learners: to buy the book		\$74
NZ1882 Level 3 General EALS300, EALL300, EALR300, EALW300	English File, 4th Edition, Intermediate ISBN 9780194035910 All learners to buy the book		\$74
NZ3667 Level 3 Applied Community EALS301, EALL301, EALR301, EALW301	English File, 4th Edition, Intermediate Plus ISBN 9780194038911 All learners to buy the book		\$74
NZ3667 Level 3 Applied Academic EALS302, EALL302, EALR302, EALW302	Oxford EAP, Pre-Intermediate / B1 ISBN 9780194002073 All learners to buy the book		\$98
NZ3669 Level 4 General EALS400, EALL400, EALR400, EALW400	English File, 4th Edition, Upper-Intermediate ISBN 9780194039697 All learners to buy the book		\$74
NZ1883 Level 4 Academic EALS401, EALL401, EALR401, EALW401	No textbook required		n/a

Level	Title	Textbook image	Approximate discounted price at Ara
NZ1884 Level 5 Academic EALS500, EALL500, EALR500, EALW500	No textbook required		n/a

Disclaimer:

All care and attention has been given to ensure the information in this document is accurate at the time of publishing. Ara does not take responsibility for any loss or harm incurred as a result of reliance upon any information which is incorrect or out of date. This document was last updated on 3 July 2026.



Want to find out more?

For details and information about making the most of your study at Ara, visit www.myara.ac.nz or get the **downloadable app**.

Get in touch if you have any questions: **0800 24 24 76** | info@ara.ac.nz