

2025 Programme Handbook

NZ2834 New Zealand Certificate in Construction Trade Skills (Level 3)

Te Hoe Rehe
Department of Trades



Rāraki Upoko – Contents

Koreru Nui - Important Information.....	4
Learner Information Handbook.....	4
Attendance	4
Non-Engagement.....	4
Drugs and Alcohol	5
Artificial Intelligence (AI) Tools	6
Nau mai ki Ara - Welcome to Ara	8
Kā Raki whakahirahira - Important Dates	9
Kā whakapātaka - Contact Details.....	13
Taipitopito akoraka - Programme Details.....	17
Mahere Ako- Programme Structure	19
Kā tika me kā kaweka o te tauira - Learner Responsibilities and Rights.....	22
Unacceptable Behaviour for Learners, or Visitors at Ara	24
Learner Behaviour in Class / Classroom Maintenance.....	25
Kā Taunakitaka Mōu – Support for You.....	26
Quick Reference – Where to find help if you have feedback or want to raise an issue.....	26
Kā Aromatawai - Assessments	28
Assessment Information.....	28
Academic Integrity.....	28
Submitting Your Work.....	29
The Grade Scale	Error! Bookmark not defined.
Kā tikaka aromatawai - Assessment Regulations	32
Regulations Flowchart.....	32
Which Form Do I Use?	32
Extensions	34
Late Submissions.....	34
Second Results (Course Level)	34
Assessment in Te Reo Māori	34
Marks Carried Forward	35
Supported Assessment.....	35

Recognising Prior Knowledge and Skills.....	35
Alternative Arrangements	35
Aegrotat.....	36
Reconsideration of Assessment Decisions	36
Reconsideration of a Course Final Grade	36
Appeal of Reconsideration Decision.....	36
Conceded Pass.....	36
Kā putaka me te Whakapōtaetaka - Results & Graduation.....	38
Accessing Your Results	38
Academic Transcripts.....	38
Access to marked assessments	38
Receiving Your Qualification.....	39
Graduation	39
Kā ture me kā tikaka - Policies & Procedures	40
Academic Policies	40
Academic Support and Progression	40
Formal Academic Contract	40
Academic Misconduct	41
Plagiarism.....	41
Use of Artificial Intelligence (AI) Tools	41
Cheating	41
Dishonest Academic Practice	42
Educative Processes.....	42
Penalties	42
Learner Behaviour Management.....	42
Probation.....	43
Exclusion	43
Suspension.....	43
Cancellation of Enrolment.....	43
Refusal of Future Enrolment	44
Copyright and Ara Learners	44
Kā tū whare - Facilities.....	47
Department related Health and Safety	47
Personal Protective Equipment (PPE).....	47
After Hours Access	48

Koreru Nui - Important Information

Ara is a Business Division of Te Pūkenga - New Zealand Institute of Skills and Technology'.

Learner Information Handbook

We recommend that you read your Programme handbook in conjunction with the Learner Information Handbook (also available on MyAra) which has more detailed information about support and services available to learners at Ara.

Attendance

Experience has shown that if you attend regularly and participate in the class activities and assessments you are more likely to succeed. Full attendance and commitment are encouraged. You are expected to be punctual and must comply with the various behaviour and safety requirements of classrooms, workshops and labs.

For an International learner satisfactory progress is defined as 100% attendance and successful completion of 75% or more of your courses.

Let Ara know when you are absent from classes or if you are sick.

Contact your tutor or advise the Department by emailing @ara.ac.nz

Non-Engagement

Ara has processes to deal with learners who formally enrol here but do not “engage” with their studies. That is, if you do not attend and/or participate and/or submit assignments and/or sit assessments or only attend briefly or spasmodically and/or do not engage significantly.

Our Department process follows these steps if you are a no-show at the start of teaching:

- 1** We will attempt to contact you 3 times and if we are not successful we will withdraw you (1) within 3 days if there is a waitlist of other learners who want to enrol, or (2) within 10% of the length of your enrolment (often 1 – 2 weeks)

- 2** You will receive an email, text or phone call asking why you have not been attending

- 3** There will be no academic or financial penalty from Ara, but you could be overpaid by Studylink

Our Department process follows these steps for disengaged learners:

- 1** The registers are checked and if your engagement and attendance is a concern, we will talk with you

- 2** You will receive an email or phone call asking why you have not been attending. You may receive a non-engagement letter

- 3** We will attempt to contact you 3 times

- 4** You may be placed on a Formal Academic Contract or withdrawn

- 5** You will receive a WD grade (after 10% of the duration of the course) or a DNC grade (after 80% of the duration of the course)

If you are struggling with attendance, we fully encourage you to talk this over as soon as possible with your tutor.

Drugs and Alcohol

In line with the expectations of many workplaces, Ara has procedures to ensure the health and safety of all learners, staff and visitors, while undertaking Ara activities.

Ara has **zero tolerance** for the misuse or abuse of alcohol and/or illegal/controlled drugs, possession and/or use of illegal/controlled drugs/substances, or intoxication on all campuses/learning sites.

Many learning activities involve high-risk situations where clear thinking, decision-making, and machinery operation need to be conducted safely. These activities cannot be compromised.

You can download the policy from [CPP506 Drugs & Alcohol Policy](#)

Artificial Intelligence (AI) Tools

When submitting work for assessment, you must adhere to Ara's Assessment and Academic Misconduct policies and not present AI such as ChatGPT as your own work. Learning Services have resources to help you learn to paraphrase or reference another person's work to avoid academic misconduct.

For more detail, please read the [Kā ture me kā tikaka - Policies & Procedures](#) section of this handbook.

Kia rite ki te ako Getting ready for study



Nau mai ki Ara - Welcome to Ara

Kia ora

Welcome to the Department of Trades, Ara Institute of Canterbury Ltd, and congratulations on being accepted into one of our training programmes. I trust you will find your time here as a learner rewarding and I look forward to seeing you progress through your study.

The Trades Campuses have a long tradition of providing quality trades training to support a range of industries regionally and nationally. Our staff are experts in their respective trades and are committed to providing you with the best possible opportunities to be successful in the pursuit of your qualifications. They will provide sound guidance, assistance and support as you work towards your goals.

With strong support from industry partners and employers in the region, there are great opportunities for you to transition from trade training into employment. Now more than ever, you can play a vital role in the future of our region and take advantage of the opportunities at hand.

As a learner you will have access to the full range of Ara facilities and services that are aimed at supporting your achievement. I encourage you to make the most of the opportunities offered to you and I am confident that your commitment to your studies will ensure your success and lead to a fulfilling career.

I wish you all the best with your programme of study.



Peter Sauer
Head of Department
Department of Trades

2025

Kā Raki whakahirahira - Important Dates

WOOLSTON CAMPUS TERM DATES

NZ2834-25-FY-CFW1 / CFW3 Mondays, Tuesdays, Wednesdays

CARPENTRY

Course start and finish date 10 February – 26 November 2025

Term dates 10 February – 09 April,
28 April – 25 June,
14 July – 17 Sept,
06 October – 26 November

NZ2834-25-FY-CFW2 Wednesdays, Thursdays, Fridays

CARPENTRY

Course start and finish dates 12 February – 28 November 2025

Term dates 12 February – 11 April,
30 April – 27 June,
16 July – 19 Sept,
08 October – 28 November

NZ2834-25-S1-PDFW Mondays, Tuesdays, Wednesdays

PAINTING AND DECORATING

Course start and finish dates 03 February – 18 June 2025

Term dates 03 February – 09 April,
28 April – 18 June

NZ2834-25-S1-JFEB Mondays, Tuesdays, Wednesdays

JOINERY

Course start and finish dates 17 February – 10 September 2025

Term dates 17 February – 09 April,
28 April – 25 June,
14 July – 10 September

NZ2834-25-FY-CM5	Mondays, Tuesdays, Wednesdays
CARPENTRY	

Course start and finish date	05 May – 18 February 2026
Term dates	05 May – 02 July, 14 July – 17 Sept, 06 October – 17 December, 12 January 2026 – 18 February

NZ2834-25-FY-CM6	Mondays, Tuesdays, Wednesdays
CARPENTRY	

Course start and finish date	19 May – 04 March 2026
Term dates	19 May – 02 July, 14 July – 17 Sept, 06 October – 17 December, 12 January 2026 – 04 March

NZ2834-25-S2-PDJW	Mondays, Tuesdays, Wednesdays
PAINTING AND DECORATING	

Course start and finish dates	14 July – 26 November 2025
Term dates	14 July – 17 September, 06 October – 26 November

NZ2834-25-S2-JJUL	Mondays, Tuesdays, Wednesdays
JOINERY	

Course start and finish dates	14 July – 11 February 2026
Term dates	14 July – 17 September, 06 October – 17 December, 12 January 2026 – 11 February

NZ2834-25-FY-CA6	Mondays, Tuesdays, Wednesdays
CARPENTRY	

Course start and finish date	04 August – 20 May 2026
Term dates	04 August – 24 September, 06 October – 17 December, 12 January 2026 – 15 April, 27 April – 20 May

NZ2834-25-FY-CA7	Wednesdays, Thursdays, Fridays
CARPENTRY	

Course start and finish dates	06 August – 22 May 2026
Term dates	06 August – 26 September, 08 October – 19 December, 14 January 2026 – 17 April, 29 April – 22 May

TIMARU CAMPUS

NZ2834-25-FY-CFT	Mondays, Tuesdays, Wednesdays
CARPENTRY	

Course start and finish date	10 February – 26 November 2025
Term dates	10 February – 09 April, 28 April – 25 June, 14 July – 17 Sept, 06 October – 26 November

Whakatau Dates

Whakatau Woolston	Wednesday 19 February (Sem 1)
	Wednesday 13 August (Sem 2)

Whakatau Timaru	Wednesday 05 March (Sem 1)
	Wednesday 30 July (Sem 2)

Public Holidays

Waitangi Day	Thursday 6 February
--------------	---------------------

Good Friday	Friday 18 April
-------------	-----------------

Easter Monday	Monday 21 April
---------------	-----------------

Easter Tuesday	Tuesday 22 April
----------------	------------------

Anzac Day	Friday 25 April
-----------	-----------------

King's Birthday	Monday 2 June
-----------------	---------------

Matariki	Friday 20 June
----------	----------------

South Canterbury Anniversary	Monday 22 September
------------------------------	---------------------

Labour Day	Monday 27 October
------------	-------------------

Canterbury Anniversary	Friday 14 November
------------------------	--------------------

Kā whakapātaka - Contact Details

Key Staff

Peter Sauer

Head of Department – Trades

Phone: (03) 940 8045

Room: V123

Peter.Sauer@ara.ac.nz



Vanessa Gooch

Manager, Construction Trades

Phone: (03) 940 6040

Room: V112

Vanessa.Gooch@ara.ac.nz



Teaching Staff

Painting and Decorating

Name/teaching area	Room	Phone	Email
Tina Falconer	V106	03 940 6117	Tina.Falconer@ara.ac.nz
John Kerrigan	V106	03 940 8717	John.Kerrigan@ara.ac.nz
Tim Robinson	V106	03 940 6116	Tim.Robinson@ara.ac.nz
Martin Watson	V106	03 940 6014	Martin.Watson@ara.ac.nz
Cody McMinn	Timaru	03 687 1908	Cody.McMinn@ara.ac.nz

Carpentry

Name/teaching area	Room	Phone	Email
Simon Blackburn	V112	03 940 6120	Simon.Blackburn@ara.ac.nz
Paddy Byrne	V112	03 940 6109	Paddy.Byrne@ara.ac.nz
James Chamberlain	V112	03 940 6119	James.Chamberlain@ara.ac.nz
Peter Chapman	V112	03 940 8608	Peter.Chapman@ara.ac.nz
Berne Dreadon	V112	03 940 6072	Berne.Dreadon@ara.ac.nz
Sam Holland	V112	03 940 6112	Sam.Holland@ara.ac.nz
Isaac McLardy	V112	03 940 6101	Isaac.McLardy@ara.ac.nz
Mitch Davison	V112	-	Mitch.Davison@ara.ac.nz
Simon Smith	V112	-	Simon.Smith@ara.ac.nz
Paul Kelliher	Timaru	03 687 1820	Paul.Kelliher@ara.ac.nz

Joinery

Name/teaching area	Room	Phone	Email
Tim Melker	V106	-	Tim.Melker@ara.ac.nz
Jody Pehrson	V106	03 940 6025	Jody.Pehrson@ara.ac.nz

Tō Akoako Your study



This section is heavy on detail and sometimes quite formal. There will be things you want to know and other things you will only refer to when something comes up.

Here are some quick highlights of what is in the following pages:

- **The detail and the rules about the qualification you have enrolled in**
- **Ara's expectations about how you will behave and what your rights are**
- **How Ara checks that you are a genuine student (like your attendance)**
- **A quick access guide to getting support**
- **How assessments work and the grades that are used**
- **The assessment regulations that could support you to pā and what forms to use (extensions, resits and more)**
- **Getting your results and going to graduation**
- **Key academic policies**

And lastly,

Health and safety information related to your study, and any after hours access arrangements

Taipitopito akoraka - Programme Details

Programme Aim

The purpose of this qualification is to provide the wider construction trades sector with work-ready people able to enter the construction trades as a labourer or an apprentice, who have developed essential transferable skills and underpinning knowledge applicable to a wide range of construction-related trades.

Graduate Profile

Graduates will be able to:

- work safely and in accordance with compliance and regulatory requirements in the construction trades sector.
- communicate effectively with colleagues and customers within the construction industry.
- read and use specifications and drawings to complete simple construction projects.
- perform simple calculations to complete a range of familiar tasks in the construction sector.

Graduates of the Allied Trades (Painting and Decorating) strand will also be able to:

- apply generic construction industry terminology and display job role and inter-relationship knowledge while carrying out construction trades tasks.
- identify and correctly use hand tools and materials to complete familiar tasks in the construction trades.
- carry out assigned project work for construction trades.

Graduates of the Carpentry strand will also be able to:

- understand and apply specific carpentry terminology and concepts such as line, level, square and plumb when carrying out carpentry work in a project environment.
- understand basic building technology, the properties of timber, concrete, steel and composite products, interior and exterior linings and fixings, and apply this knowledge to carpentry projects.
- use construction and installation processes and techniques while carrying out carpentry projects.
- carry out assigned carpentry work in a project environment.

Graduates of the Joinery strand will also be able to:

- understand and apply specific joinery terminology when carrying out joinery work in a project environment.
- apply knowledge of the types of timbers, panel products, fixings and hardware to joinery projects.
- follow the sequence of machining, construction for assembling and installing joinery items while carrying out joinery projects
- carry out assigned joinery work in a project environment.

Programme Regulations

The New Zealand Certificate in Construction Trade Skills (Level 3) with strands in Allied Trades, Carpentry and Joinery is a six month to one-year full time equivalent programme of study requiring the successful completion of:

- 60 course credits for the Allied Trades Strand (18 weeks full time – excluding breaks).
- 90 course credits for the Joinery Strand (26 weeks full time – excluding breaks).
- 120 course credits for the Carpentry Strand (36 weeks full time – excluding breaks).

The programme comprises 30 core compulsory course credits, plus:

30 elective strand credits for the Allied Trades Strand

60 compulsory strand credits for the Joinery Strand

90 compulsory strand credits for the Carpentry Strand

with a minimum of 60 credits at Level 3.

Minimum completion time: None specified (allowing for Recognition of Prior Learning, Cross Credit and Credit Transfer).

The maximum period of time to complete the programme is three years. Any extension to this period would require a written application from the Head of Department or delegate to the Department Group.

Mahere Ako- Programme Structure

Programme Matrix

Use the following table as a guide to the courses in your programme. You can find out how many credits each course is worth, and how many credits and courses you need to do to complete your study.

Painting and Decorating Strand

Code	Course Title	Level	Credits	Course factor
Core Compulsory Courses				
CARP3001	Workplace Safety Fundamentals	3	15	0.1250
CARP3002	Core Construction and Communication Skills	3	15	0.1250
Subtotal			30	0.2500
Painting and Decorating Strand Courses				
CARP3501	Allied Trades Tools, Materials, and Terminology	3	15	0.1250
CARP3502	Allied Trades Projects	3	15	0.1250
Totals (including Core Compulsory Courses)			60	0.500

Carpentry Strand

Code	Course Title	Level	Credits	Course factor
Core Compulsory Courses				
CARP3001	Workplace Safety Fundamentals	3	15	0.1250
CARP3002	Core Construction and Communication Skills	3	15	0.1250
Subtotal			30	0.2500

Carpentry Strand Courses				
CARP3101	Preliminary Works for Construction	3	15	0.1250
CARP3102	Support Structures for Building Work	3	15	0.1250
CARP3103	Wall Structures for Building Work	3	15	0.1250
CARP3104	Roof Structures for Building Work	3	15	0.1250
CARP3105	Exterior Envelope	3	15	0.1250
CARP3106	Interior Linings and Finishing	3	15	0.1250
Totals (including Core Compulsory Courses)			120	1.000

Joinery Strand

Code	Course Title	Level	Credits	Course factor
Core Compulsory Courses				
CARP3001	Workplace Safety Fundamentals	3	15	0.1250
CARP3002	Core Construction and Communication Skills	3	15	0.1250
Subtotal			30	0.2500
Joinery Strand Courses				
CARP3201	Timber and Board	3	15	0.1250
CARP3202	Machining and Assembly	3	15	0.1250
CARP3203	Interior and Exterior Joinery	3	30	0.2500
Totals (including Core Compulsory Courses)			90	0.7500

Transition Arrangements

Applicants that have previously completed training in this area who wish to transition into this programme will be dealt with on a case-by-case basis and an individual learning plan will be developed.

Transition arrangements adhere to the principle that no learner will be disadvantaged by this transition. The transition plan may vary across ITPs depending on previous programmes of study delivered.

Our Access to Your Work

We may contact you to discuss the right to copy, reproduce, and use your student work for promotional and education purposes for Ara.

Kā tika me kā kaweka o te tauira - Learner Responsibilities and Rights

Learner Responsibilities and Rights

The Ara community consists of a diverse range of people and cultures, and we respect all members of our community. Our aim is to have a community where learners respect themselves and others, a community where healthy social interactions and academic pursuits are expected. To create and maintain the best possible teaching and learning environment, you are protected by basic rights and are expected to respect the rights and responsibilities of others.

Useful Contacts:

Independent Student Advocate: Duncan Dunbar.

Email: duncan.dunbar@ara.ac.nz | Mobile: 027 273 6246

Student Life Team Leader: Meg Nelis,

Email: studentvoice@ara.ac.nz

Your Responsibilities as a Learner

As a learner here, Ara expects you to:

Behave safely

- Take care when using equipment and facilities.
- Wear suitable clothing.
- Follow health and safety guidelines and instructions.
- Not endanger yourself or others.
- Follow relevant professional guidelines.
- Ensure you are not intoxicated or under the influence of drugs on Ara premises or when involved in Ara related activities both formal and informal, with your programme, field trips, internships, work experience, etc.

Respect others

- Be sensitive to personal, social, and cultural differences.
- Respect the needs, rights, and freedoms of others.
- Help to uphold the integrity of Ara qualifications by discouraging/reporting dishonest practices.

Observe Ara rules

- Behave appropriately for a tertiary education environment.

- Genuinely attempt to meet all course requirements including financial obligations.
- Comply with visa requirements.
- Be honest when completing assignments/other assessments.
- Comply with requirements of programme handbooks.
- Follow Ara policies and regulations (refer: <https://www.ara.ac.nz/about-us/policies>).

Your Rights as a Learner

Ara will protect your right to fairness. You have a right to:

Fairness

- Open and accurate information.
- Fair evaluation and assessment.
- Have any problems handled as quickly as is practical and consistent with 'natural justice'.
- Personal privacy.
- Support, representation, and advocacy.

Ara Respects your right to:

- Academic freedom, defined as 'freedom, within the law, to question and test received wisdom, to put forward new ideas and to state controversial or unpopular opinions.' (Education and Training Act 2020)
- Freedom from any form of harassment, bullying, or unjust discrimination.
- Respect for personal, social, and cultural differences.
- Representation in the development, implementation, and review of policies.

Ara will protect your right to Standards:

- Study programmes that meet internal and external standards for approval and registration.
- To have competent and effective teachers.
- Appropriate support services delivered in a professional manner.
- Facilities and resources that meet or exceed Health & Safety legislation.

Concerns / Complaints:

Your rights will be upheld by Ara management. If you think they have been infringed, in the first instance please contact your course tutor. If it is not appropriate to contact your tutor regarding your complaint, or the matter has not been resolved, please contact your Head of Department/Programme Manager or Student Advocate and/or the Student Life Team

Unacceptable Behaviour for Learners, or Visitors at Ara

The following are examples of behaviour which are not acceptable for anyone (learners, or visitors), at Ara or involved in Ara related activities:

- Breaking any NZ law (e.g., assault, theft).
- Any form of cheating (including plagiarism and other dishonest practices).
- Misuse of technology, software, hardware, or communication systems provided by Ara (refer Ara Code of Conduct for ICT Users in particular).
- Any form of harassment, bullying, or unjust discrimination including social media.
- Unacceptable sexual behaviour (e.g., sexual harassment, accessing pornography/other restricted material).
- Misuse of alcohol, drugs or other substances affecting behaviour, health, or safety.
- Smoking (including vaping) on Ara campuses. (Ara is a smoke free campus).
- Violence or threats of violence.
- Vandalism or other abuse of facilities and buildings.
- Disruptive behaviour in class (e.g., arriving late, use of any electronic device, interfering with the learning of other individuals).
- Inductions (informal) are not permitted at Ōtautahi House or on other Ara premises and are strongly and expressly discouraged by Ara.
- The above is not an exhaustive list of unacceptable behaviours. Where appropriate, Ara reserves the right to contact or report to external authorities.

Academic staff have the responsibility to maintain a safe and effective learning environment.

They may ask you to leave the class if your behaviour indicates limited ability to be safe, disturbance to others learning, or puts others at risk.

Ara takes this code of conduct seriously. Your marks, reports, and references may include an assessment of your behaviour, as well as your educational achievement. Serious infringement may lead to probation, suspension, or cancellation of a current enrolment and/or refusal of a future enrolment (see relevant policies). This may be referred to an appropriate external authority e.g., NZ Police.

Learner Behaviour in Class / Classroom Maintenance

Be respectful of other learners and the classroom environment, following classroom specific rules and requirements. To avoid any distractions, you must ensure any electronic device you have on you/with you is diverted, not set to ring, or switched off. Both staff and students have a responsibility to ensure this happens.

Dress Code

There is no written dress code, but you are expected to attend classes dressed in a way which is generally acceptable. However, you're expected to be "dressed for the occasion" when going on a site visit or undertaking a Cooperative Education Project. You may be prevented from going on site visits if the staff member is of the opinion that you're not dressed for the occasion. In specific courses, a "dress code" and standard is required. These will be detailed in the Programme Handbook and Course Outline.

Kā Taunakitaka Mōu – Support for You

Quick Reference – Where to find help if you have feedback or want to raise an issue

The Education (Pastoral Care of Tertiary and International Learners) Code of Practice sets out the expectations that tertiary education organisations need to consider how their overall systems and resources support learners' wellbeing and safety.

For more detailed information on the code, and support areas listed below, please refer to the [Learner Information Handbook](#) on MyAra

Support Area	Details	People	Links
Department Staff	This team are your first port of call for issues impacting your ability to study	Tutor Programme Leader Programme Manager Head of Department	
Student Reps	Student reps are invited to attend student rep meetings within your department where they can raise issues on your behalf	Student Voice Posters of your student reps are displayed in your department	Student Voice
Student Services	Ara offers a wide range of student services	Student Advisors Health Centre Student Voice	Student Support
Te Pae Ora	A wellbeing hub for ākonga		Te Pae Ora Te Pūkenga
Independent Student Advocate	Student Advocacy is available to assist you if you are facing difficulties within or beyond Ara	Duncan Dunbar 027 273 6246 Duncan.Dunbar@ara.ac.nz X106 (Rakaia Centre)	Student Advocacy

Support Area	Details	People	Links
Complaints Process	that could affect your study		
	Ara has a process to support you and respond if you have a concern or complaint about a course, tutor, or another aspect of your programme	Complaints Co-ordinator	CPP117-Raising-problems-or-complaints CPP117a-Raising-problems-or-complaints-form
Safeplace	Safeplace is the tool we use to report risks, accidents and other incidents	Safety & Wellbeing Co-ordinator Safety & Wellbeing Business Partner	SafePlace FAQ for Learners
Important Policies	All Ara Corporate and Academic Policies can be found at Ara Policy Library		Student Rights and Responsibilities Addressing Bullying, Harassment and Discrimination

Kā Aromatawai - Assessments

Assessment Information

At the start of each course, you will be given workbooks and/or training manuals and other handouts to help you through your programme of learning.

Before each assessment you will be given the following information:

- The number, type, and due dates for all assessments. This includes tests and assignments.
- The weighting of each assessment in your course that contributes to your final grade, if applicable.
- The assessment policy for resits, second results and alternative assessments, if they are different from the policies in this document.
- The time frame for getting your marked assessments back from tutors, if they are different from those stated in this document.
- The penalties for handing assessments in late, if they are different from those stated in this document. These may be different for each course.

Assessment Types

Formative assessment	Verbal and written feedback that takes place throughout classes and the programme.
-----------------------------	--

Summative assessment	Assessments throughout the year that are based on learning outcomes for the course and determine how well you have achieved each outcome. You are given grades and written feedback. These assessments may include practical tests and projects.
-----------------------------	--

The contents of the course work will be explained by the tutor for each course. If at any point your tutor is concerned about your progress, they will let you know.

Academic Integrity

Te Pūkenga requires learners to be honest and act with integrity in their learning and assessments.

You are required to:

- present your own original work for assessment
- acknowledge contributions from other sources by using the referencing format required for the programme (failure to do this correctly may be regarded as plagiarism); this includes direct copying, paraphrasing, summarising, and the rearranging of, another person's words or idea/s
- not cheat in tests or examinations
- ensure you follow all instructions and the correct procedures (e.g., no use of mobile phones or personal electronic devices)
- not enter into any agreements with other learners to collude on assignments
- collaborate only as permitted
- not over- or misrepresent the individual contributions of members of any group assignment
- not knowingly help others to cheat
- not present another person's assessment as your own (this includes purchased assessments)
- not act or behave in a way that prevents others from completing their assessments
- keep written and electronic work secure to prevent others from accessing and copying work.

Any exceptions to the above are clearly stated in the information and requirements for the course.

By enrolling at Ara, you agree to your work being reviewed by various means to confirm an assessment is your own work. This includes the use of similarity detection software.

Any breaches of academic integrity follow the process set out in the academic integrity procedures. For more detailed information, please refer to the [Academic Integrity Policy](#)

Submitting Your Work

Your tutors will let you know if they have guidelines for presenting your assessments and how to submit your work. Use a computer to create your assessments.

You may be required to submit your work manually or electronically. If you submit your work electronically, keep a copy until your official results are published at the end of the semester. If you have any questions, contact your Programme Leader.

Note: Ara uses as part of its assessment processes electronic plagiarism detection. You will, from time to time, be required to submit assessments for scanning. Electronic copies of assessments must be retained by you until the official results are published after the end of semester or year.

Quality Assurance

Your assessments and exam scripts may be used for internal and external moderation, monitoring, programme reviews, aegrotats (if available), and the resolution of academic appeals and complaints. This helps Ara meet internal and external academic quality assurance requirements. If your assessments are used this way, before they are used, any information that could reasonably be expected to identify you will be removed.

Grade Scale

The following grade scale (TP Competency) will be used for all courses on the programmes unless advised otherwise in the course descriptor:

Grade	Result	Definition
A	Achieved	Pass
N	Not Achieved	Not passed/No credit

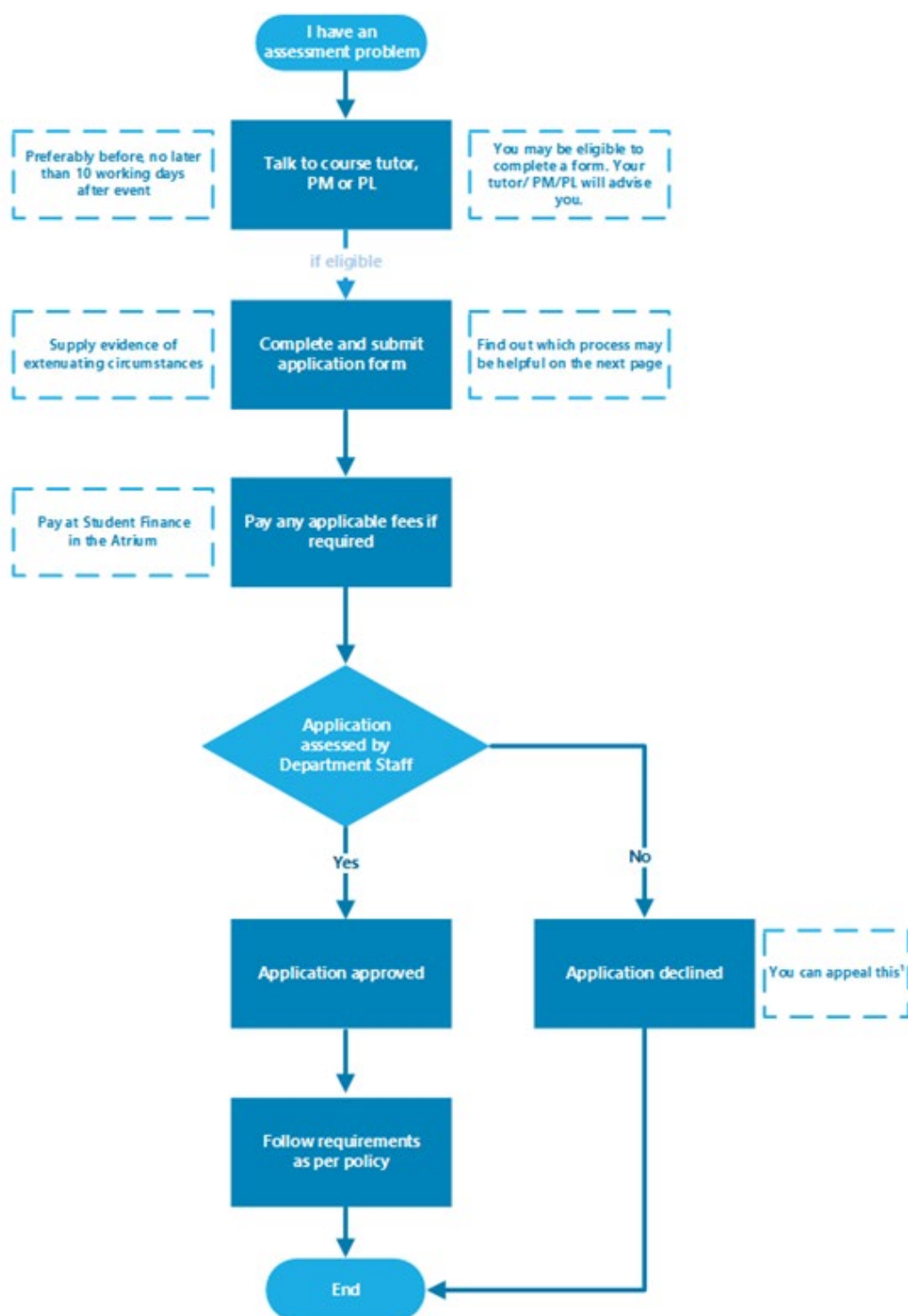
Other Grades

Other grades that may be awarded for particular circumstances in competency-based courses include:

Course result	Grade	Description
P	Pass	Ungraded Pass usually through prior learning or where a graded level of achievement cannot be applied. Unit standards recognised through prior learning are awarded a CT grade.
Unfinished at time of reporting	DNC	Did not complete course requirements or formal withdrawal after 80% of the duration of the course or informal withdrawal at any time.
Withdrawn	WD	Formal withdrawal within the non-academic penalty period (10% of the duration of the course).
Grade Pending Completion	GP	Grade pending completion beyond course end date with approved extension.
Attendance Met	AO	Met course attendance requirements.

Kā tikaka aromatawai - Assessment Regulations

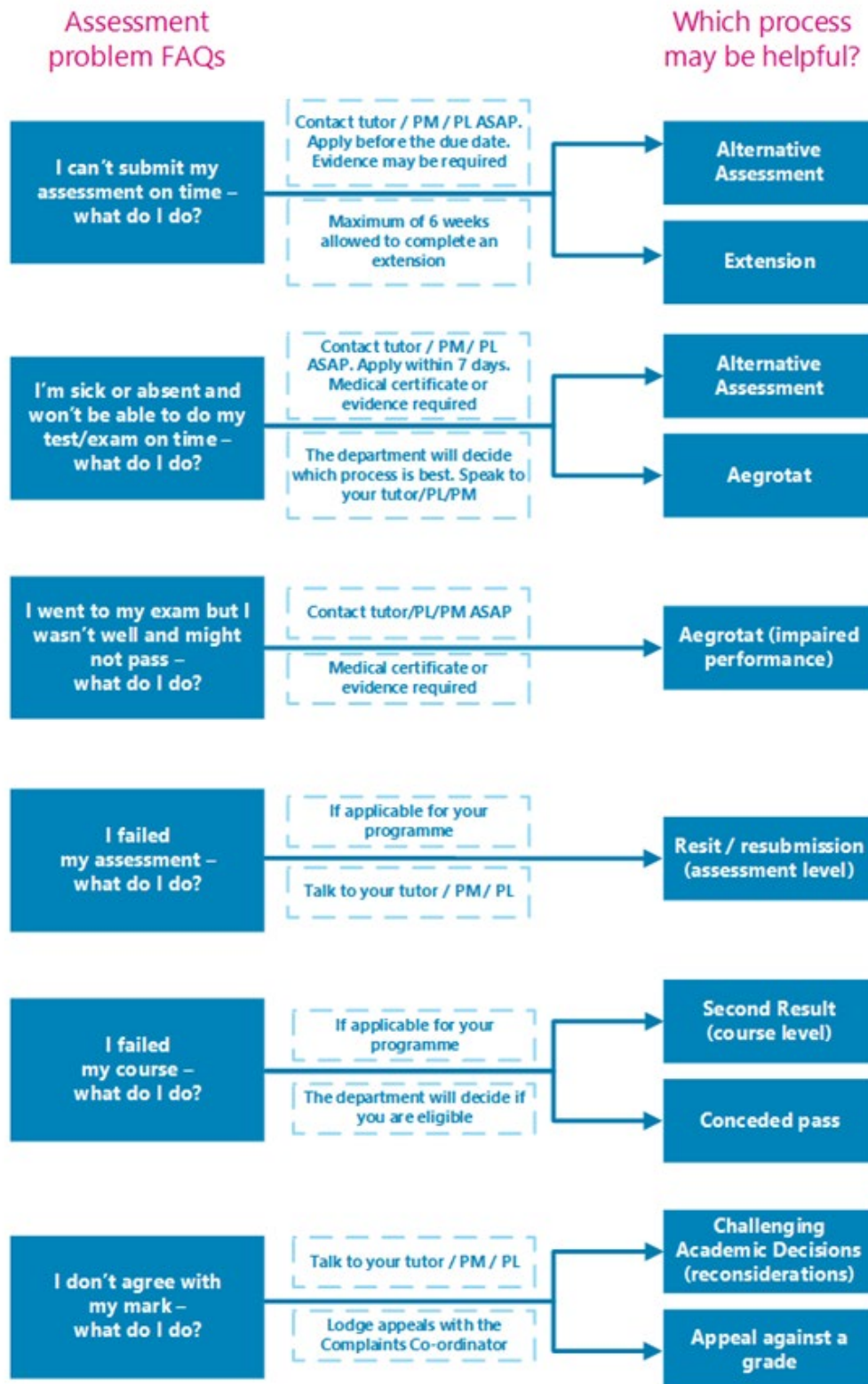
Regulations Flowchart



^¹The student lodges the appeal in writing with the Complaints Co-ordinator with a copy to the Head of Department

Which Form Do I Use?

** Always speak to your tutor, Programme Manager (PM) or Programme Leader (PL) to see if you are eligible*



You must attempt and submit all summative assessment items within the timeframe or by due date indicated in the course outline **unless an extension has been granted**.

Extensions

If you anticipate difficulty in submitting assessments by the due time and date you may be able to request an extension.

For information about how to apply for an extension of time, see [Assessment Policy](#) - scroll down and find **3.14 Extensions**. You can download the form from [Application for Extension of Time](#)

Late Submissions

Late submissions do not have to be accepted for marking, accepting a late submission is at the discretion of the Assessor and Programme Manager.

Resits or resubmission of assessment tasks

If you have submitted and failed an assessment task you may be able to apply for a resubmission resit.

For information about how to apply for a resit or resubmission, see [Assessment Policy](#) - scroll down and find **3.15 Resits and Resubmissions**. You can download the form from [Application for Resit or Resubmission](#)

Second Results (Course Level)

If you receive a fail grade in a course, you may be able to apply for a reassessment of the course.

For information about how to apply for a second result, see [Assessment Policy](#) - scroll down and find **3.16 Second Results**. You can download the form from [Application for Second Result](#)

Assessment in Te Reo Māori

You can request to have your assessments conducted in Te Reo Māori, except where the task requires English language or other language capability. Other exceptions may apply.

For information about how to apply for assessment in Māori, see [Assessment Policy](#) - scroll down and find **3.4 Assessment in Te Reo Māori**.

Marks Carried Forward

You may be able to apply to carry marks forward for completed assessments to the next available occurrence of the course and not redo those assessments.

For information about how to apply for marks carried forward, see [Assessment Policy](#) - scroll down and find **3.18 Marks Carried Forward**. You can download the form from [Marks Carried Forward Application form](#)

Supported Assessment

You may be able to apply for special assistance in order to undertake an assessment.

For more information about how to apply for additional assessment arrangements for disabled learners, see [Assessment Policy](#) - scroll down and find **3.19 Procedures for additional assessment arrangements for disabled learners**.

Recognising Prior Knowledge and Skills

If you believe that a qualification, course or unit standard you have previously completed a recognised educational institution, or work/life experience, may be relevant to the qualification you are studying, you could apply for recognition of your prior knowledge and skills.

The previous grade is carried forward for any Cross Credit or Credit Transfer, and the Pass (P) grade given where a standard grade cannot be stated.

For information about how to apply for credit recognition, see [Credit Recognition](#). You can download the form from [Credit Recognition Application](#)

Alternative Arrangements

If you are unable to sit a test or exam on the scheduled date, or complete an assessment on the due date, you may be able to apply for an alternative assessment.

For information about how to apply for an alternative assessment see [Assessment Policy](#) - scroll down and find **3.13 Alternative Assessment Arrangements**. You can download the form from [Application for Alternative Time for Test / Exam](#)

Aegrotat

Aegrotats are not available on this programme.

For information about these regulations, see [Aegrotat Pass Regulations](#)

Reconsideration of Assessment Decisions

If you have reason to believe that the mark for a particular assessment is incorrect you may be able to apply for a reconsideration.

For information about challenging academic decisions (reconsideration), see Challenging Academic Decisions (Reconsideration) [Assessment Policy](#) - scroll down and find **3.20 Reconsiderations and Appeals**. You can also refer to [Reconsiderations and Appeals](#)

Reconsideration of a Course Final Grade

If you have reason to believe that the grade for a particular assessment is incorrect you may be able to apply for a reconsideration.

For information about challenging academic decisions (reconsideration), see Challenging Academic Decisions (Reconsideration) [Assessment Policy](#) - scroll down and find **3.20 Reconsiderations and Appeals**. You can also refer to [Reconsiderations and Appeals](#)

Appeal of Reconsideration Decision

If you consider that the outcome of the reconsideration process is incorrect or unfair, or a reconsideration is not available, you may appeal against the final grade awarded.

For information about challenging academic decisions (reconsideration), see [Assessment Policy](#) - scroll down and find **3.20 Reconsiderations and Appeals**. You can also refer to [Reconsiderations and Appeals](#)

Conceded Pass

Conceded passes are not available on this programme.

For information about conceded passes, see [Assessment Policy](#) - scroll down and find **3.17 Conceded Pass**.

Kā putaka me te Whakapōtaetaka - Results & Graduation

Accessing Your Results

Results of individual assessments will be made available to you within fifteen (15) working days of your assessment due date.

These results may be returned to you in class or online. Final grades for each course will be available online within fifteen (15) working days of the end date of the course from the Student Portal at accessible through [MyAra](#) or through the My Ara app.

Any results displayed publicly will use unique identifiers such as learner ID numbers, not learner names.

Note: Staff members are under no obligation to advise you of your final grade for a course. After you have completed all the assessments in a course, we ask that you allow the staff time to complete the marking. At the end of semester staff members are under great pressure to submit final results to Academic Records so that they can be processed and then made available to all learners as soon as possible.

Academic Transcripts

If you require your results to be printed, visit Central Academic Records (CAR) in A121 (City Campus), or email academic.records@ara.ac.nz to request a transcript.

Access to marked assessments

You are entitled to access to your written work submitted for assessment.

Where assessed work is to be returned, time limits for collection will be advised by the department.

You may view copies of your examinations, but these are retained by Ara. Any time or access limitations will be advised by the department.

Please note that in order to meet internal and external academic quality assurance requirements, student assessments and examination scripts may be used for the purposes of:

- internal and external moderation
- programme review
- aegrotats (if available)
- resolution of academic appeals and complaints

Assessments used for these purposes will have information which could reasonably be expected to identify the individual removed before they are copied and used.

Receiving Your Qualification

Once you have successfully completed your approved programme of study you will receive a notification advising you that your certificate is ready and will be posted to you.

Note: Please make sure your address details are up to date when you finish studying. Advise Academic Records if you are updating your address details after you receive the notification, so the correct address is used.

Graduation

We hold several graduation ceremonies.

If you're eligible to graduate, you'll receive a communication from Ara advising you of this. You'll need to complete the online graduation form, by the date indicated, to register for your ceremony.

Note: If you believe you are entitled to graduate and do not hear from Ara please contact the Department Administrator or Academic Records.

For all information on graduation, including dates, please see [Graduation](#)

Kā ture me kā tikaka - Policies & Procedures

Academic Policies

All policies are accessible on the Ara website [Ara Policy Library](#). Ara provides a student advocacy service.

It is well known that people learn better when they work together, and this is encouraged, but when it comes to assessment, collaboration (working together) is not permitted unless it is a formal part of the assignment set by the tutor(s). Each learner is also responsible for making sure his/her work is not able to be copied by others. Sharing or comparing tests, exams and assessments is prohibited and, if detected, will be treated as “academic misconduct”.

Academic Support and Progression

Support is available if you, as a learner, are having difficulty meeting academic standards or you seek guidance, assistance or support with study related matters.

If you are not achieving satisfactorily, you will receive specifically targeted advice and assistance at an early stage.

Academic staff members will work with you if you are not meeting academic standards to document and implement a plan. This will include identifying and monitoring goals, expected academic progress, timelines and support.

If satisfactory progress is not made then you will be invited to meet with the Head of Department or his/her delegate, who will explain the circumstances, discuss the consequences, and give you the opportunity to present your view of events leading up to the meeting. Depending on the outcome of the meeting, a Formal Academic Contract may be entered into.

Formal Academic Contract

If your progress as a learner in a current course is still considered by tutors to not be satisfactory you will be invited to a meeting and advised in writing by the Head of Department or delegate.

The Formal Academic Contract will record the deficiencies or concerns, the progress which must be met, any assistance available, the time within which

progress or change must be demonstrated, and the method and criteria by which such progress or change will be measured.

For more information about Academic Support and Progression, see [Academic Support and Progression](#) - scroll down and find **3.3 Formal Academic Contract.**

Academic Misconduct

Cheating, plagiarism and other dishonest academic practices have serious consequences in this programme and if you fail to meet academic standards you, as a learner, may be subject to educative processes or penalties.

Plagiarism

Copying, taking or using someone else's work or ideas and presenting them as if they were your own original work or thought, without clear acknowledgement of the actual source.

Use of Artificial Intelligence (AI) Tools

Generative Artificial Intelligence (AI) services such as ChatGPT can be used for learning. When submitting work for assessment, you must adhere to Ara's Assessment and Academic Misconduct policies. In relation to AI, this means;

- you must not present any output from any AI services as your own work in your assessment.
- you must use your own words.
- if you paraphrase or quote from a source such as a textbook, website and AI service, you must reference correctly.

If you submit an assessment using content copied directly from an AI service without acknowledgement, it is a form of academic misconduct.

Cheating

Acting deceitfully or dishonestly to gain academic recognition or an academic result. Examples include copying answers from another person's work, taking useful information secretly into a test or exam, improperly accessing information about questions and/or answers, arranging for someone else to produce an assignment or to sit a test or exam.

Dishonest Academic Practice

Any other act or omission that contravenes Ara academic requirements of a programme or course.

Educative Processes

These are actions designed to assist you, as a learner, in understanding the expected standards and skills needed to succeed and may include:

- a facilitated discussion with an appropriate staff member
- a formal contract with Learning Services or other appropriate staff member for skills development including specific learning outcomes and timeframes
- additional work may be required
- a formal written warning may be given, or marks deducted.

Penalties

These are actions designed to deter misconduct and/or deal with the consequences of it in a fair and appropriate way and may include:

- a decision not to mark or assess the work or record a mark/grade
- formally recorded fail / zero for the work concerned which remains on your academic record
- cancellation of credit already awarded if the academic misconduct is admitted/ established after assessments have been completed and recorded
- formal notice indicating 'Intentional Plagiarism' (or other misconduct) placed on academic record for a specified period of time
- formal written warning
- probation or suspension from the programme or other penalty.

Learner Behaviour Management

If you are identified as a learner who displays unacceptable behaviour the department will monitor your progress, and provide support at the earliest stage. This may include referral to Student Support Services to ensure additional support is provided to you.

If you do not respond you may be placed on a behaviour improvement plan This will include identifying, documenting, implementing, and monitoring goals, expected behavioural progress, timelines, and support. If you do not meet the outcomes outlined in the behaviour management plan, you may be moved to probation.

Probation

If your behaviour, as a learner, is unacceptable and of concern to staff or other learners, you will be advised of this in writing by the Head of Department. This written warning is known as probation.

The written advice must briefly record the deficiencies or concerns, the progress or standards of behaviour which must be met, any assistance available, the time within which progress or change must be demonstrated, and the method and criteria by which such progress or change will be measured.

The progress or change required should be reasonable and the criteria for assessing whether the progress or change has been achieved should be easily understood and capable of being clearly demonstrated.

The written advice must include the warning that failure to make progress or achieve change may lead to suspension and/or cancellation of current enrolment(s) and/or refusal of future enrolment(s).

These requirements are known as the “terms and conditions of probation”.

For more information about probation, see [Probation](#) - scroll down and find **3.4 Probation**.

Exclusion

An exclusion may apply to one or more specified courses, a whole programme, or all enrolment at Ara. An exclusion may also apply to one or more specified services or facilities.

Suspension

Suspension is a short-term exclusion and is the formal process by which you, as a learner, are temporarily prohibited from attending classes in one or more courses and/or is refused access to one or more services/facilities provided by Ara. In serious circumstances a Trespass Notice may also be issued.

Cancellation of Enrolment

Ara may cancel your enrolment as a learner on any of the Education Act (1989) grounds:

- The person is not of good character.
- The person has been guilty of misconduct or a breach of discipline.

- The person is enrolled for full-time instruction in another institution or in a school.
- The person has made insufficient progress in the person's study or training after a reasonable trial at the institution or at another institution.

The decision to cancel or refuse an enrolment may be made only by the Operations Lead or nominee.

Failure to meet the terms and conditions of Academic Contract and/or probation may lead to exclusion.

When a cancellation is being considered, the Head of Department must invite you to an interview.

Refusal of Future Enrolment

Any person may, for good reason and on good evidence, be refused enrolment at Ara generally or in a particular programme or course only by the Operations Lead or by his or her nominee under specific delegation.

Enrolment may be refused on any of the Education Act (1989) grounds.

Failure to meet the terms and conditions of probation may lead to exclusion.

The Head of Department must forward a recommendation to the Operations Lead that the person's application(s) to enrol be refused. The recommendation must state which of the Education Act (1989) grounds is the basis of the recommendation and must include the supporting evidence.

For more information about Exclusion, including Appeal Rights and Other Rights, see [Exclusion](#) - scroll down and find **3.4 Refusal of Enrolment**.

Copyright and Ara Learners

Copyright legislation exists to protect copyright owners from unauthorised copying of their work (literary, dramatic, musical and artistic), and provides them with exclusive rights to how their work is used.

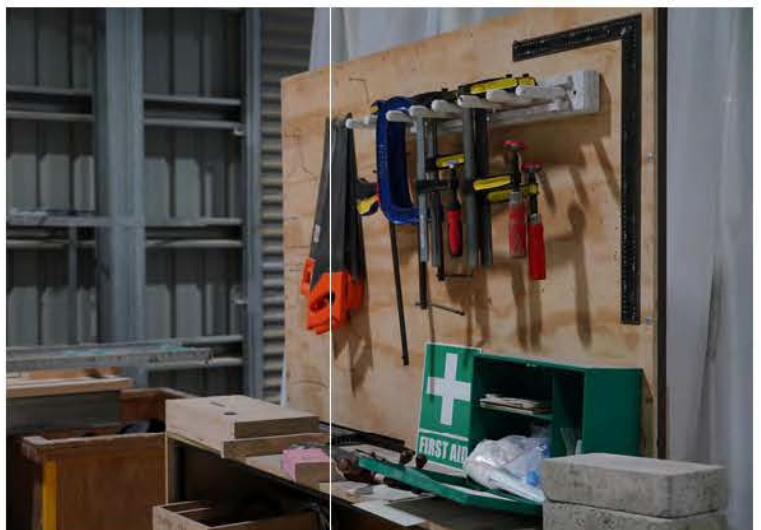
During your study with us we will endeavour to educate you on copyright use, including referencing, approved copying, and proper use of electronic material and downloadable music.

Infringement of copyright regulations may result in civil or criminal prosecution against you, as the learner, and/or Ara. Infringement by you, as a learner, may also be considered academic misconduct and result in penalties.

For more information about Copyright, see [Copyright](#)

Kā tū where me kā rauemi

Facilities and resources



Kā tū whare - Facilities



Department related Health and Safety

Please refer to the [Learner Information Handbook](#) for general Health and Safety information and evacuation details. In an emergency advise a staff member, and if no one is available phone 111.

Refer to your tutors and laboratory managers for instructions and specific Health & Safety information related to laboratory and field activities.

Personal Protective Equipment (PPE)

The following safety equipment (PPE) will be provided by Ara:

Safety glasses	Safety boots	Hi vis vest	Ear muffs
			
Safety gloves	Dust mask	Overalls	
			

Every workshop has a first aid kit and staff trained in first aid - if you are off site as part of your programme, your tutor will carry an appropriate first aid kit.

Defibrillators

There are defibrillators located in the following locations in **V Block** at **Woolston campus**:

- Staffroom.
- On the wall in the corridor outside the Electrical Technician's office (Room V207- 2nd Floor).

There are three defibrillators on the **Timaru campus** – they are in the following locations:

- Reception area near the main entrance
- Staffroom
- Godley Block between the male and female toilets

We encourage you to report 'near miss' incidents to Department staff as Ara is keen to minimise hazards on campus and will use this information to inform changes that reduce risks.

Please note: Headphones or earbuds are NOT to be worn in class or on site

After Hours Access

Woolston Campus

Learners can access V Block until 9pm Monday – Thursday when night classes are on.

Staff and learners have access to SSB from 7.30am-6pm Monday – Thursday, and 4.30pm Fridays.

Timaru Campus

Staff and learners have access to their specialist buildings from 7am–10pm, seven days a week.

Disclaimer:

All care and attention have been given to ensure the information in this document is accurate at the time of publishing. Ara does not take responsibility for any loss or harm incurred as a result of reliance upon any information which is incorrect or out of date. This document was last updated on 8 April 2025.



Want to find out more?

For details and information about making the most of your study at Ara, visit **www.myara.ac.nz** or get the **downloadable app**.

Get in touch if you have any questions: **0800 24 24 76 | info@ara.ac.nz**